

SAE J3194™ TAXONOMY & CLASSIFICATION OF POWERED MICROMOBILITY VEHICLES

POWERED MICROMOBILITY VEHICLE

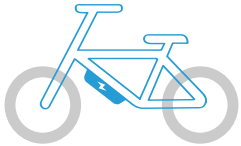
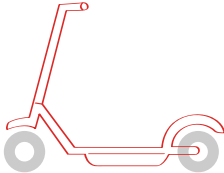
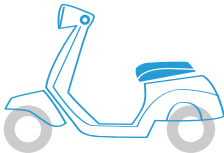
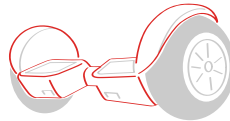


A wheeled vehicle that must:

- Be fully or partially powered
- Have a curb weight \leq 500 lb (227 kg)
- Have a top speed \leq 30 mph (48 km/h)

Scope of J3194™

- Only includes vehicles that are primarily designed for human transport and to be used on paved roadways and paths
- Excludes solely human-powered vehicles

TYPES OF POWERED MICROMOBILITY VEHICLES¹

| | Powered Bicycle | Powered Standing Scooter | Powered Seated Scooter | Powered Self-Balancing Board | Powered Non-Self-Balancing Board | Powered Skates |
|-----------------------------|--|--|---|--|--|--|
| |  |  |  |  |  |  |
| Center column | Y | Y | Y | Possible | N | N |
| Seat | Y | N | Y | N | N | N |
| Operable pedals | Y | N | N | N | N | N |
| Floorboard / foot pegs | Possible | Y | Y | Y | Y | Y |
| Self-balancing ² | N | N | N | Y | N | Possible |

¹All vehicles typically designed for one person, except for those specifically designed to accommodate additional passenger(s)

²Self-balancing refers to dynamic stabilization achieved via a combination of sensors and gyroscopes contained in/on the vehicle

CLASSIFICATION SYSTEM

The classification system consists of the micromobility vehicle type with descriptors of curb weight, vehicle width, top speed and power source.

| Name | Code | Description |
|----------------------|------|--|
| Curb weight | | |
| Ultra lightweight | WT1 | Curb weight \leq 50 lb (23 kg) |
| Lightweight | WT2 | 50 lb (23 kg) < curb weight \leq 100 lb (45 kg) |
| Midweight | WT3 | 100 lb (45 kg) < curb weight \leq 200 lb (91 kg) |
| Midweight Plus | WT4 | 200 lb (91 kg) < curb weight \leq 500 lb (227 kg) |
| Vehicle width | | |
| Standard-width | WD1 | Vehicle width \leq 3 ft (0.9 m) |
| Wide | WD2 | 3 ft (0.9 m) < vehicle width \leq 4 ft (1.2 m) |
| Extra-Wide | WD3 | 4 ft (1.2 m) < vehicle width \leq 5 ft (1.5 m) |
| Top speed | | |
| Ultra low-speed | SP1 | Top speed \leq 8 mph (13 km/h) |
| Low-speed | SP2 | 8 mph (13 km/h) < top speed \leq 20 mph (32 km/h) |
| Medium-speed | SP3 | 20 mph (32 km/h) < top speed \leq 30 mph (48 km/h) |
| Power source | | |
| Electric | E | Powered by an electric motor |
| Combustion | C | Powered by an internal combustion engine |



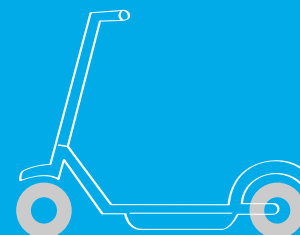
**TO LEARN MORE ABOUT
MICROMOBILITY, CONTACT:**

Annie Chang
Head of New Mobility
annie.chang@sae.org

sae.org/micromobility

GUIDANCE ON TERMINOLOGY USE

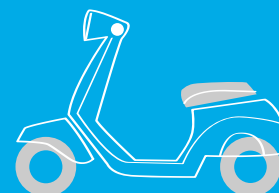
The following naming convention may be used to develop either word- or code-based terms using classifiers and vehicle types.



- Curb weight: 40 lb
- Width: 2 ft
- Top speed: 18 mph
- Propulsion: electric

“Ultra lightweight, standard-width, low-speed, electric standing scooter”

“WT1/WD1/SP2/E standing scooter”



- Curb weight: 190 lb
- Width: 2 ft
- Top speed: 30 mph
- Propulsion: electric

“Midweight, standard-width, medium-speed, electric seated scooter”

“WT3/WD1/SP3/E seated scooter”