



# WELCOME



## THE PURPOSE OF TONIGHT:

- **Identify** issues and potential concerns associated with the proposed US Department of Labor (DOL) Headquarters
- **Gather** early public input on the scope of the project and study
- **Encourage** you to provide your thoughts and ideas in writing

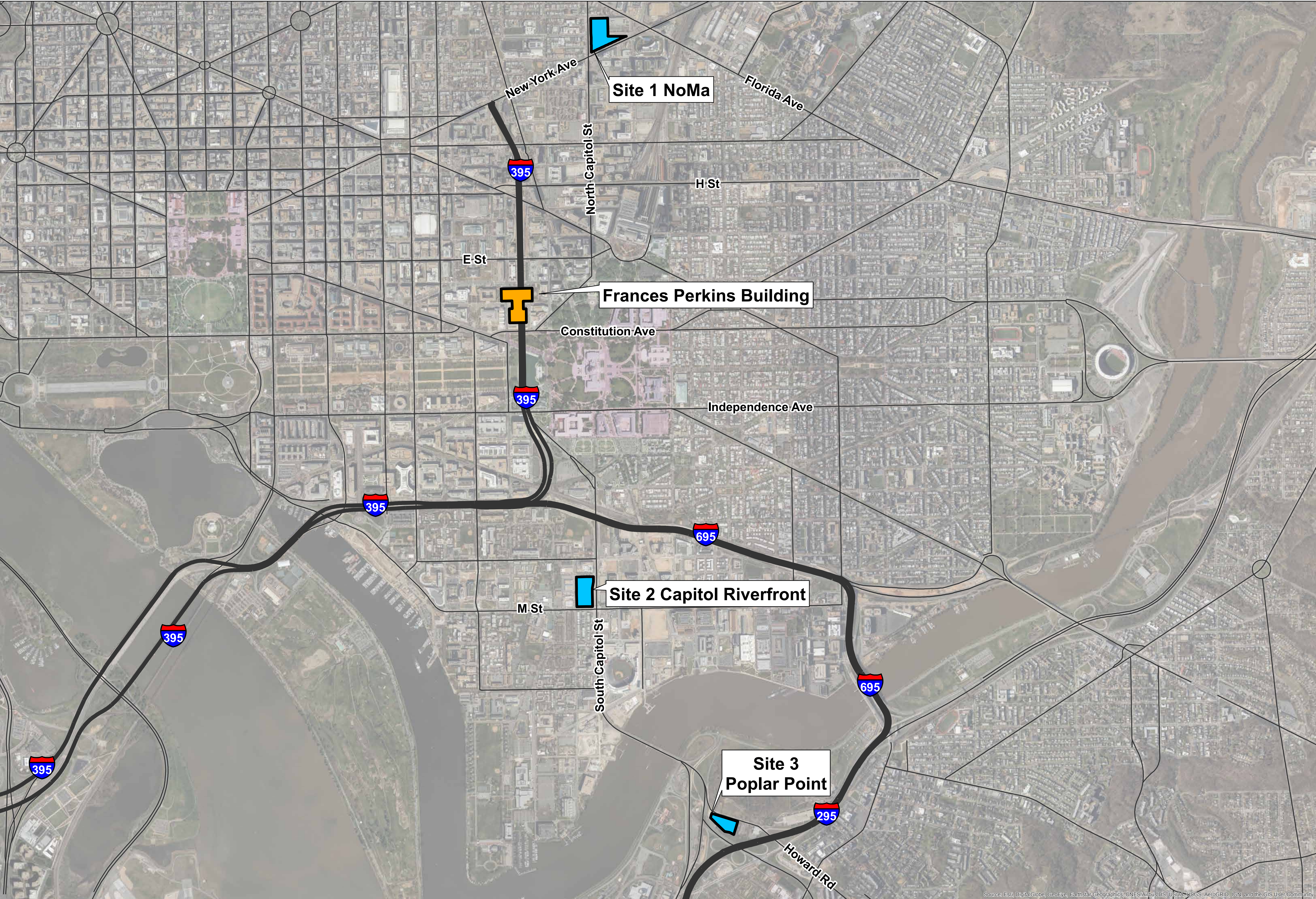
## PURPOSE

- **Consolidate** the Department of Labor (DOL) headquarters.
- **Provide** the agency with modern, efficient office space.
- **Centralize** the agency's presence in the Nation's Capital Region.
- **Reduce** its real property footprint and real estate costs.
- **Leverage** the value of the existing DOL headquarters.

## NEED

- The Frances Perkins Building is outdated and inefficient.
- The existing facility needs costly repairs and replacement of major building systems.
- A new office is needed to offer flexibility in space, technology and infrastructure.



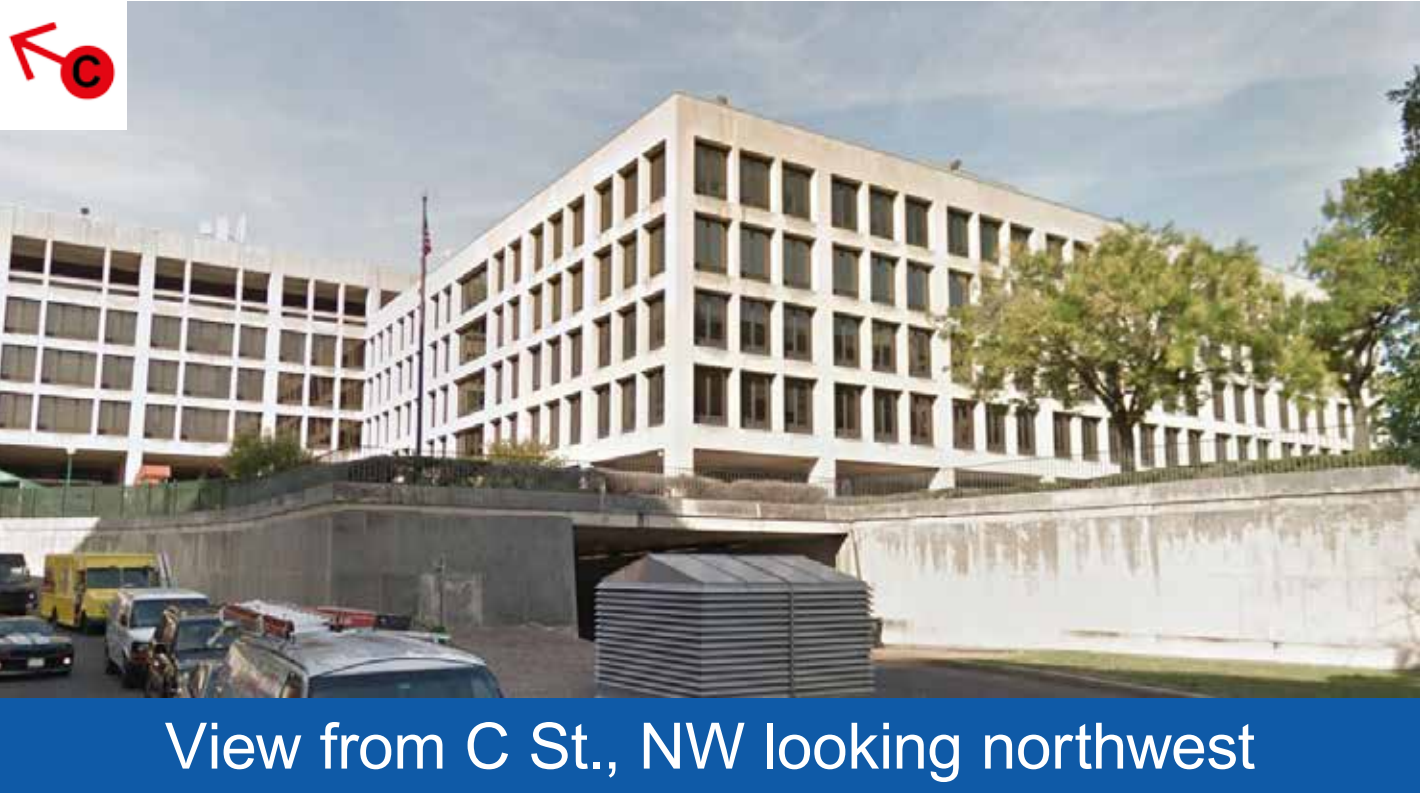
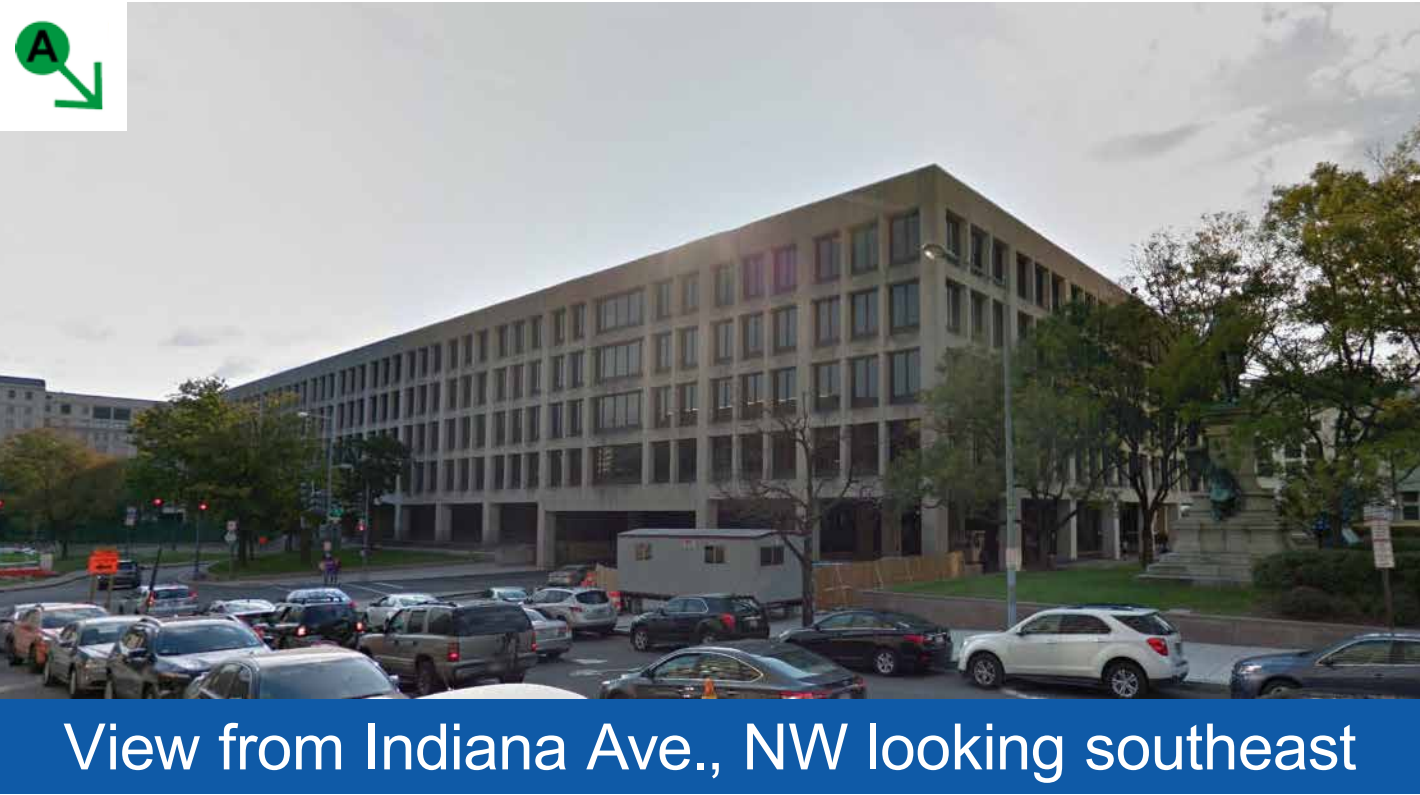
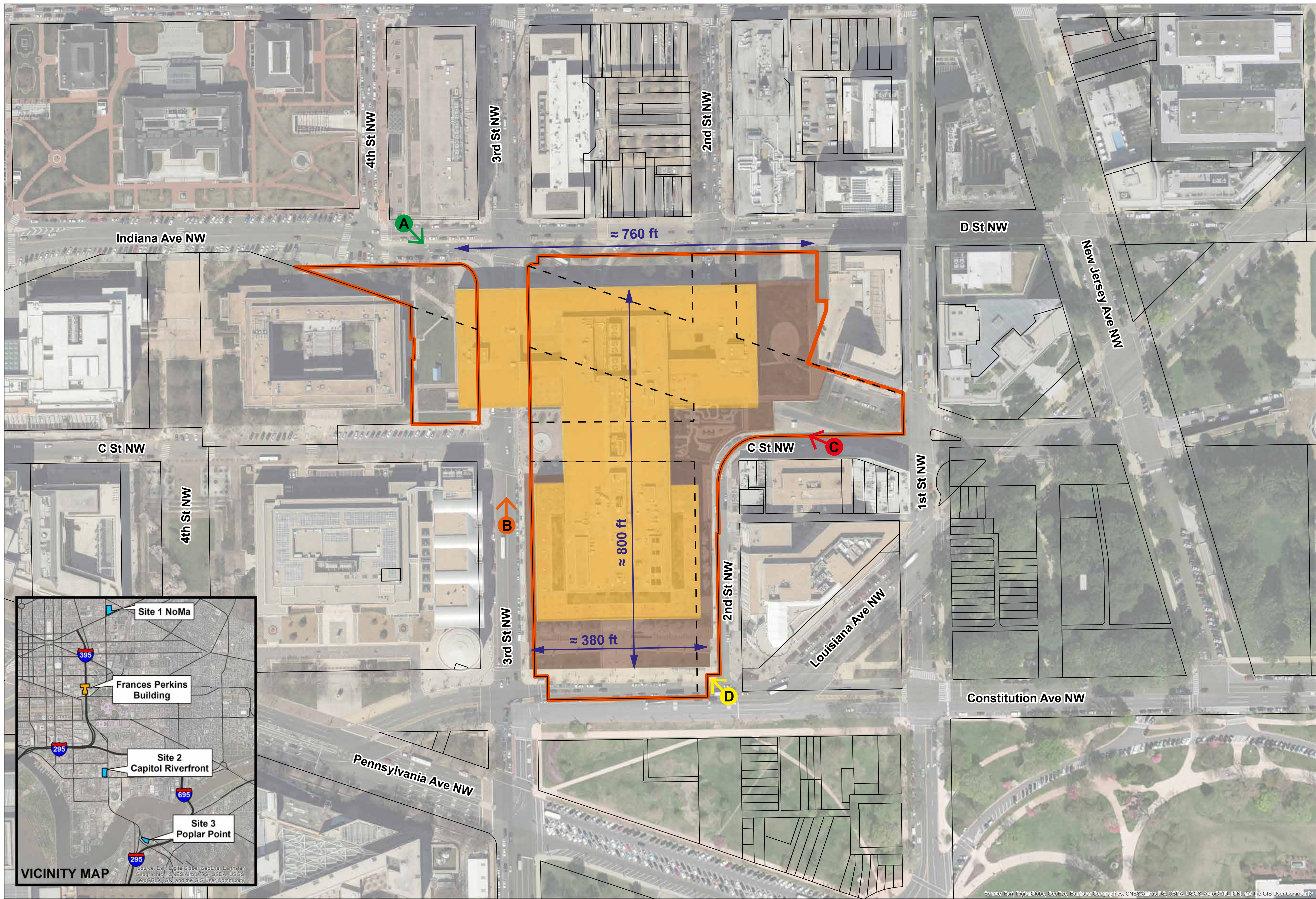


 Existing Department of Labor Site     Alternative Sites



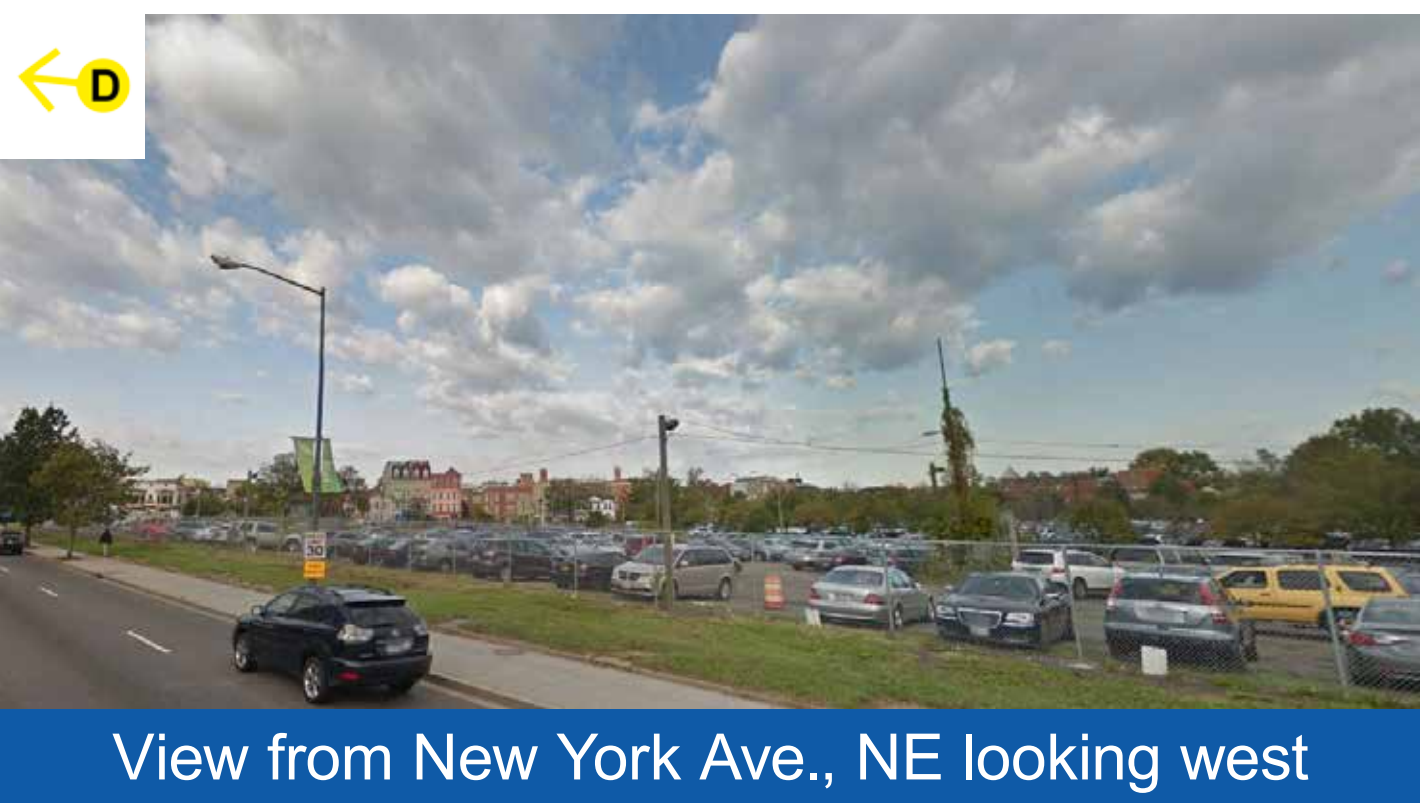
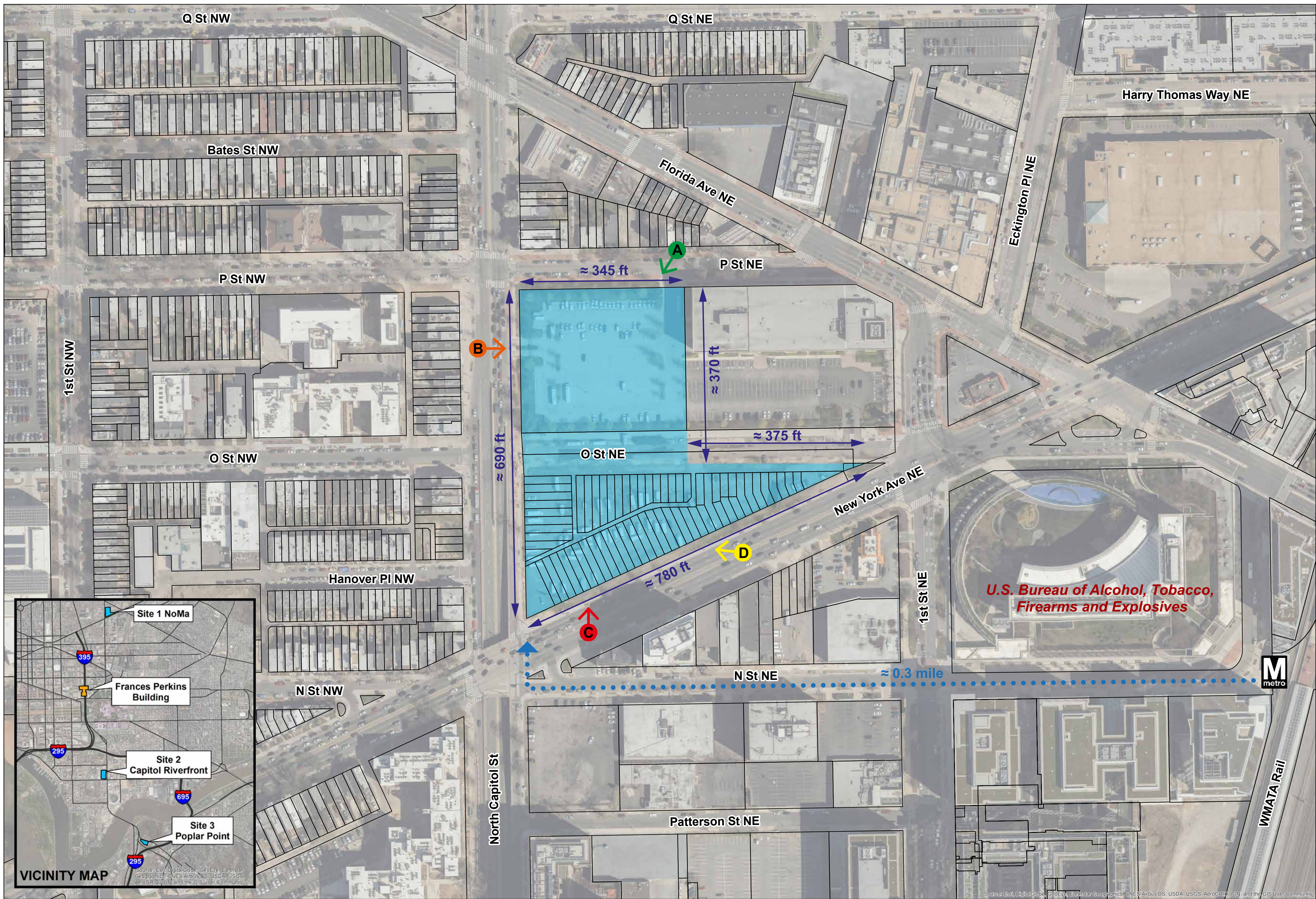


Existing Lot Area	11.9 Acres
Existing Building	42.5 Total Gross Acres
Zoned	D-3 and D-4



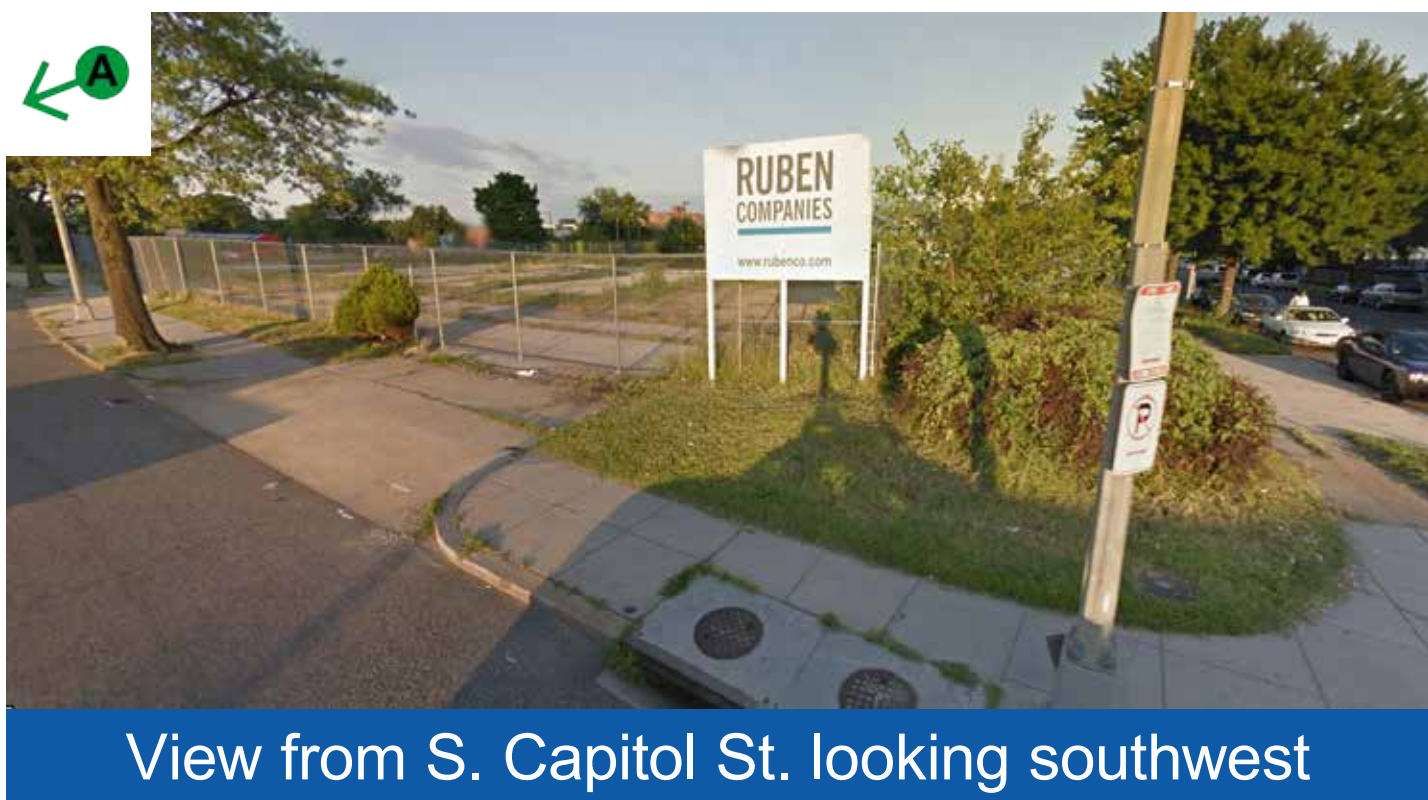
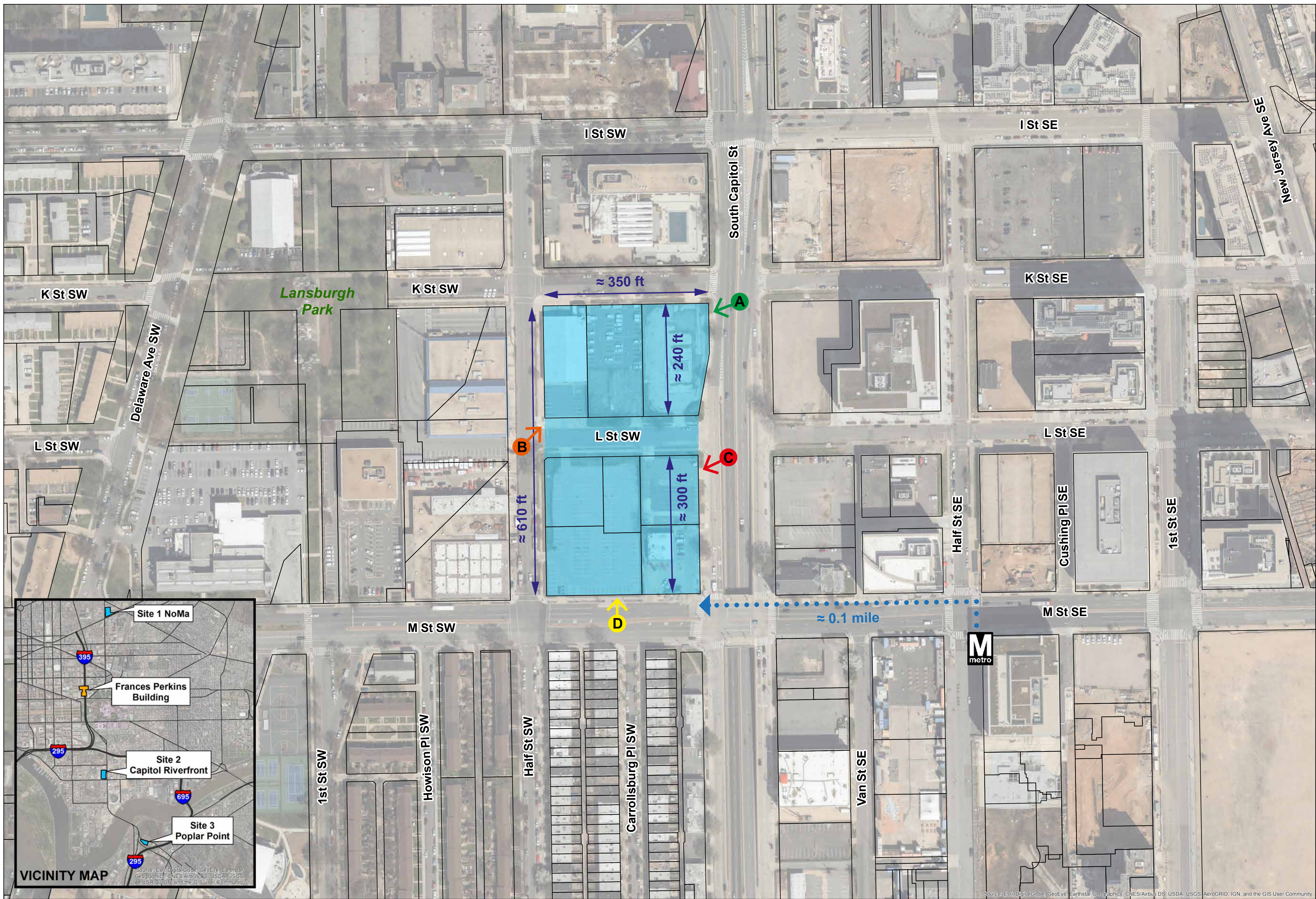


Lot Area	Approximately 5.5 acres
Zoned	D-5





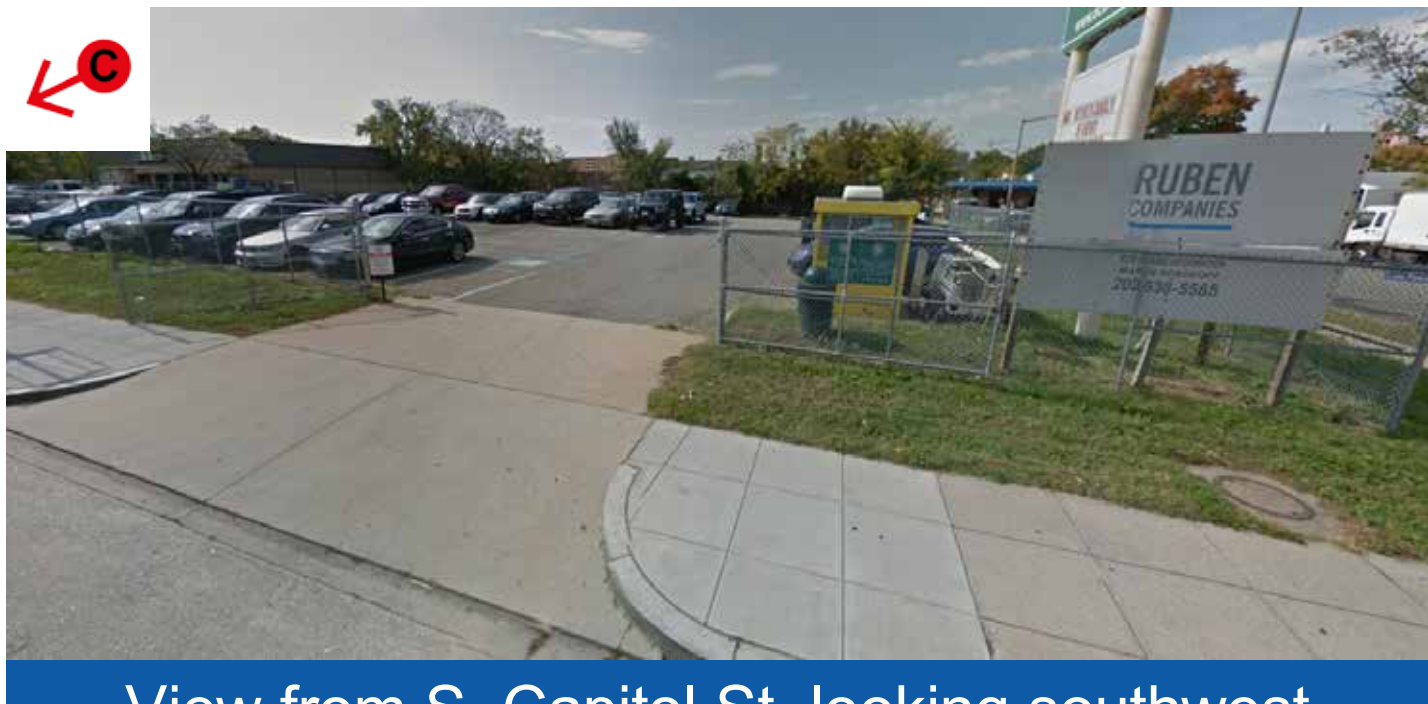
Lot Area	Approximately 4.6 acres
Zoned	D-5



View from S. Capitol St. looking southwest



View from the intersection of Half St., SW and L St., SW looking northeast



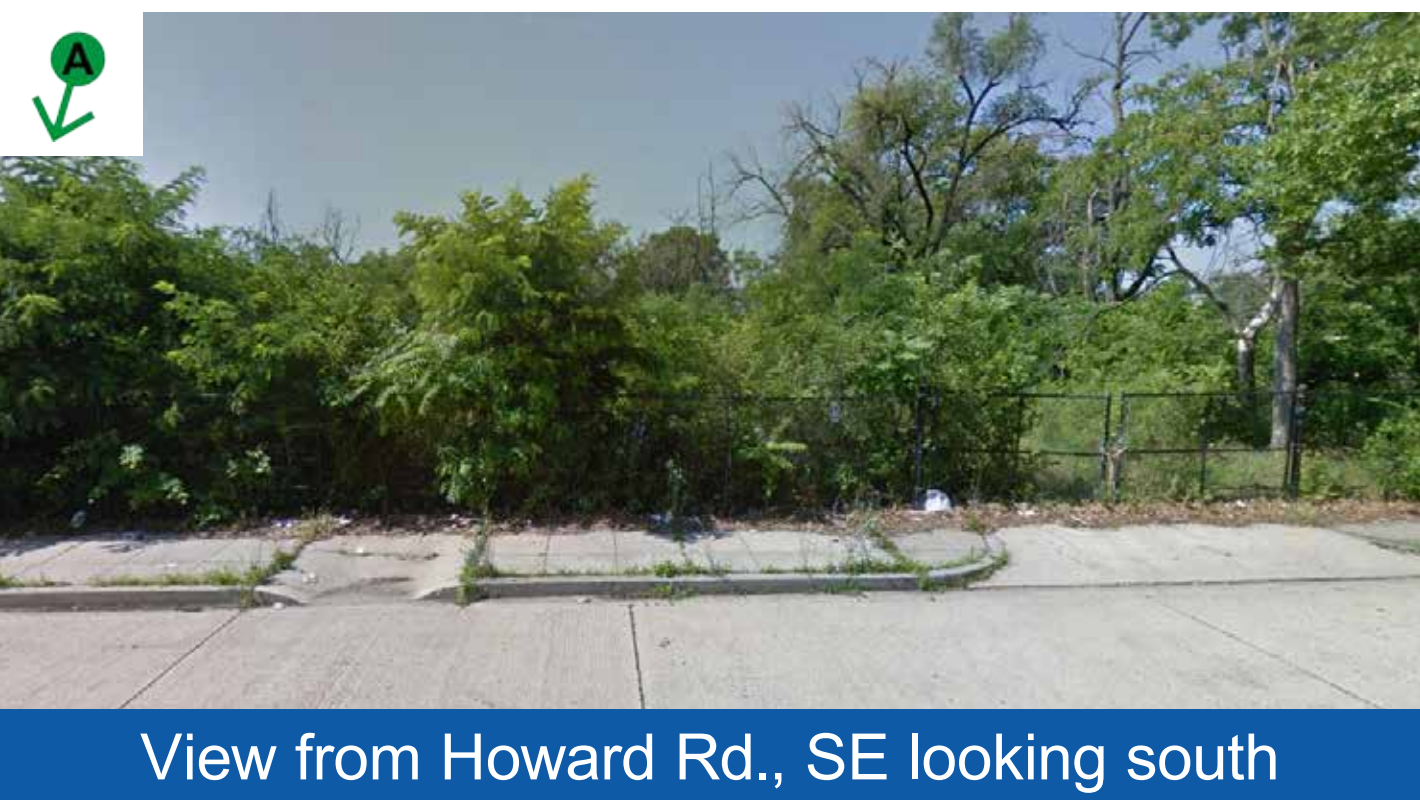
View from S. Capitol St. looking southwest



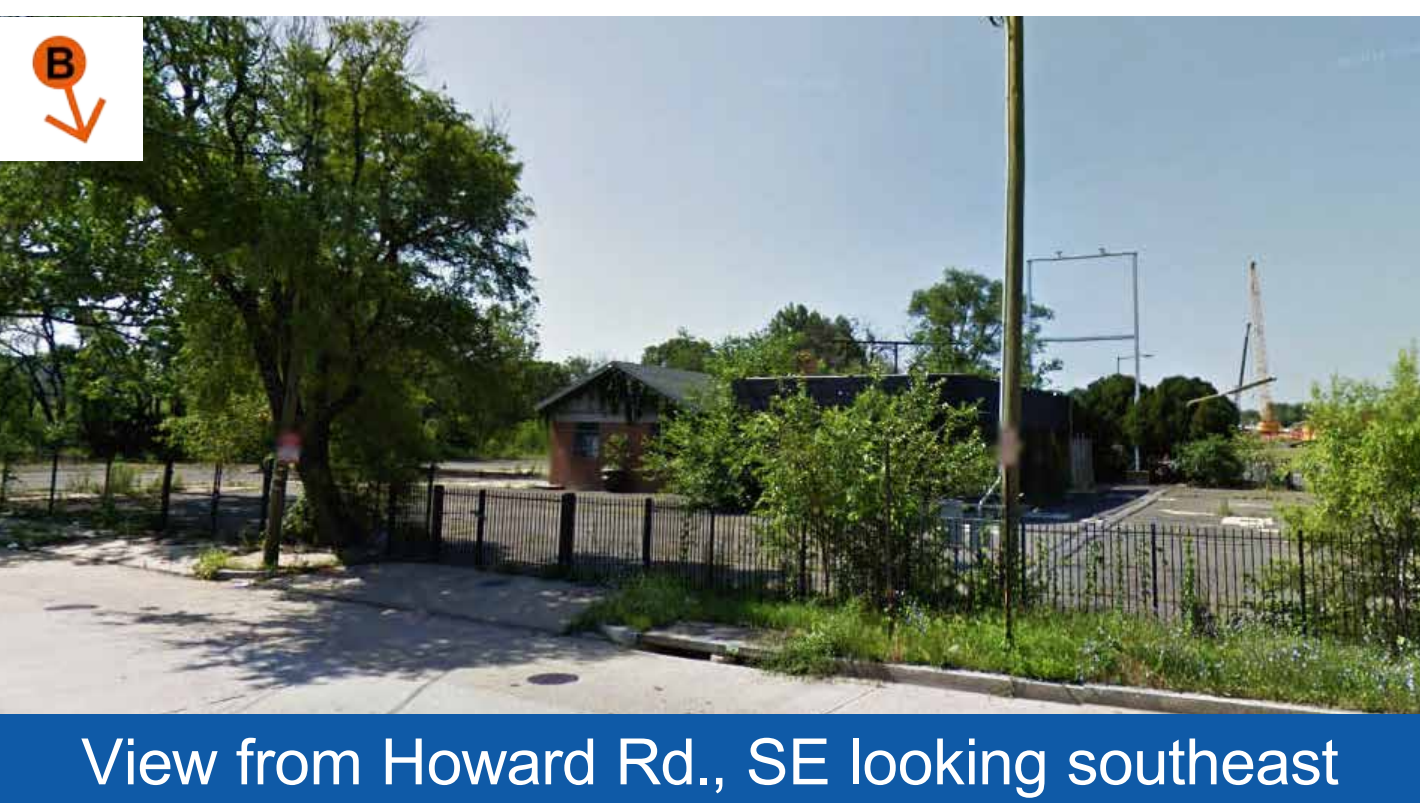
View from M St., SW looking north



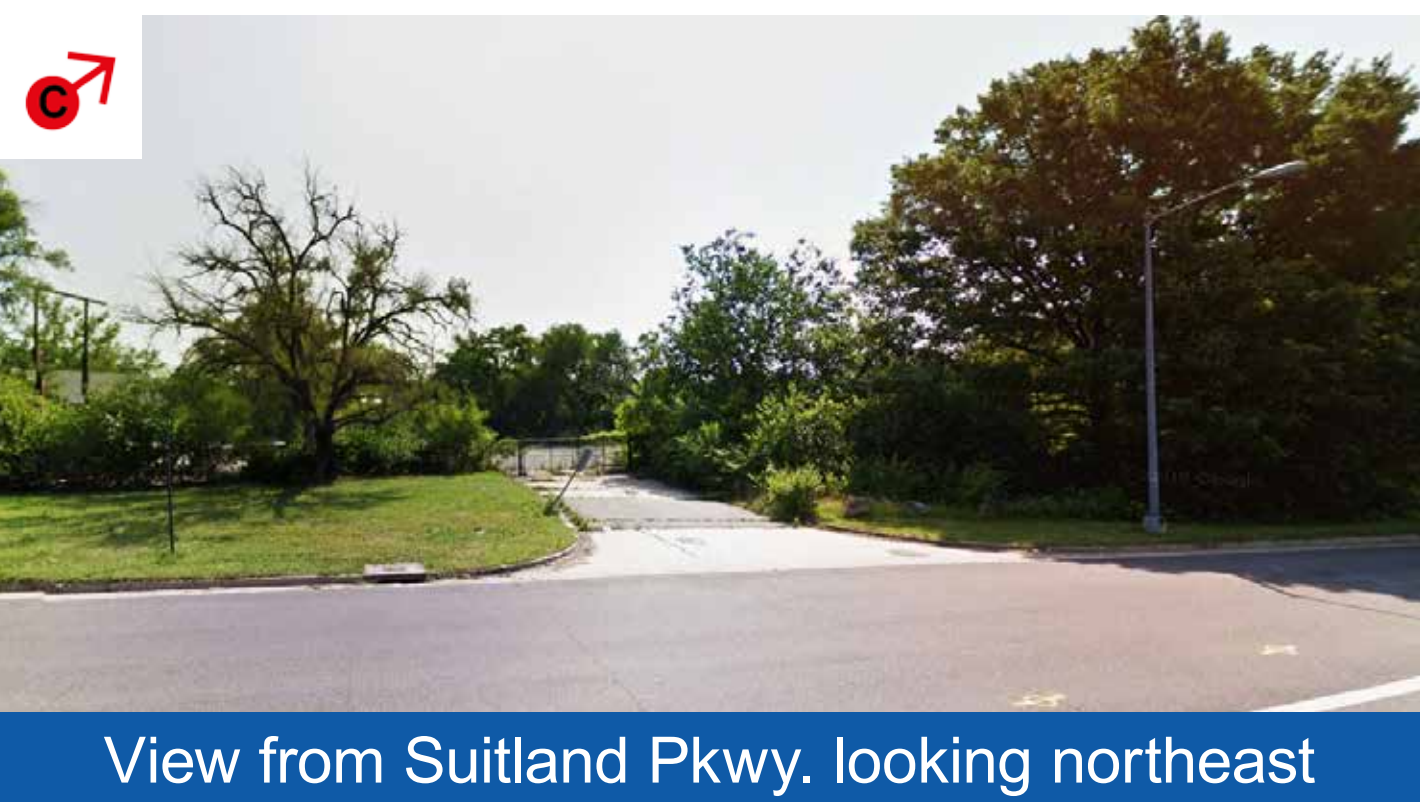
Lot Area	Approximately 2.8 acres
Zoned	MU-14



View from Howard Rd., SE looking south



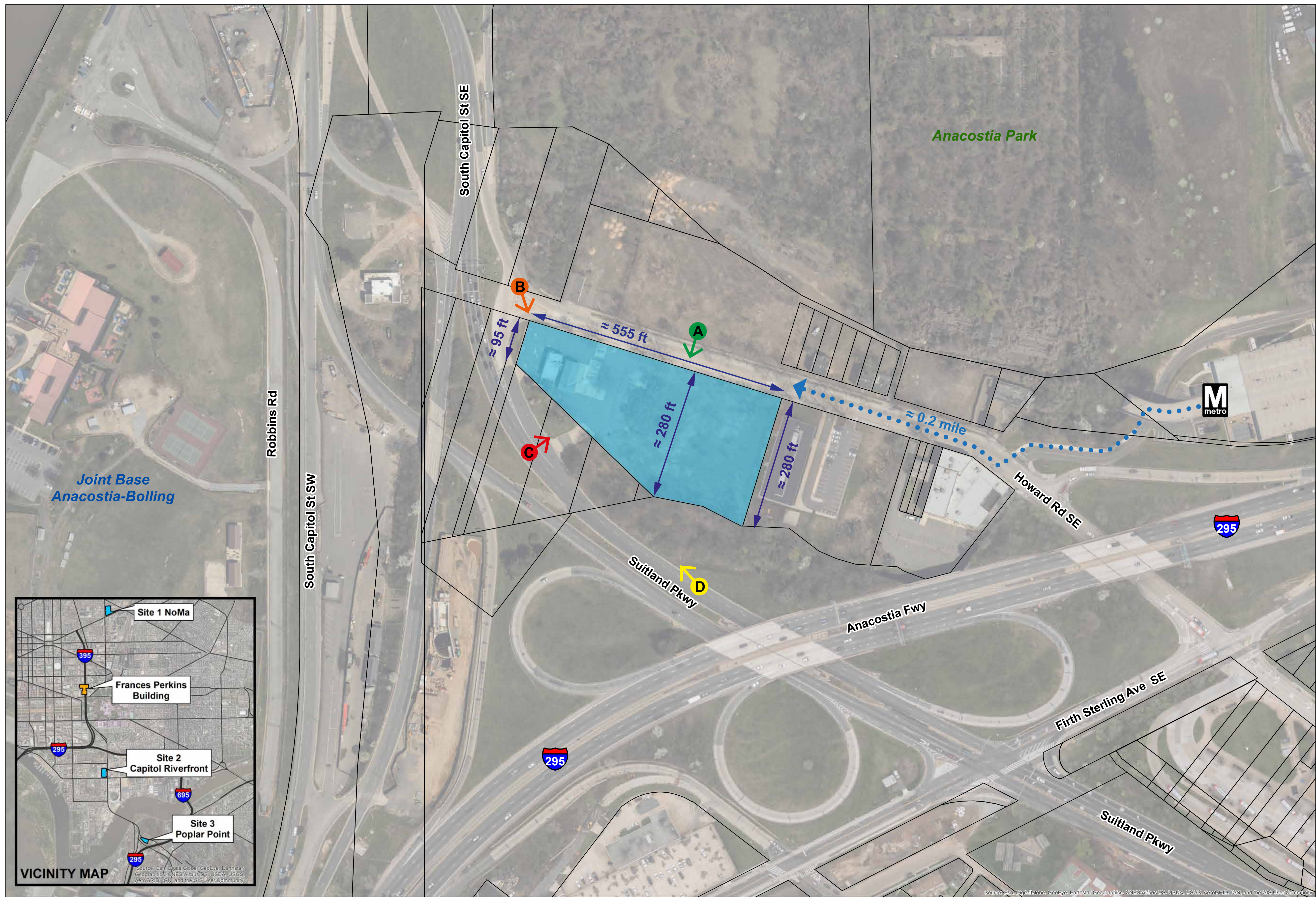
View from Howard Rd., SE looking southeast



View from Suitland Pkwy. looking northeast



View from Suitland Pkwy. looking northwest



Site 3 Poplar Point    Property Lines    Entrance to Anacostia Station

0 50 100 200 Feet



## **NATURAL RESOURCES (e.g.):**

- Water Resources
- Stormwater Management
- Soils
- Vegetation and Wildlife Habitat
- Wetlands
- Protected Species

## **PHYSICAL RESOURCES (e.g.):**

- Air Quality
- Climate Change
- Noise

## **UTILITIES AND INFRASTRUCTURE (e.g.):**

- Energy
- Solid Waste Disposal
- Hazardous Waste/Material

## **SOCIAL ENVIRONMENT (e.g.):**

- Land Use and Community Cohesion
- Open Space and Parkland
- Environmental Justice
- Community Facilities

## **TRANSPORTATION RESOURCES (e.g.):**

- Vehicular Traffic
- Pedestrian/Bicycle Circulation
- Parking
- Public Transit

## **CULTURAL RESOURCES\* (e.g.):**

- Historic Resources
- Archaeology
- Visual Resources

\* Cultural resources will also be evaluated in the concurrent Section 106 process.



**The public is invited to identify any alternatives, issues, or concerns they might have with the proposed project so the GSA can appropriately consider them in the EIS.**

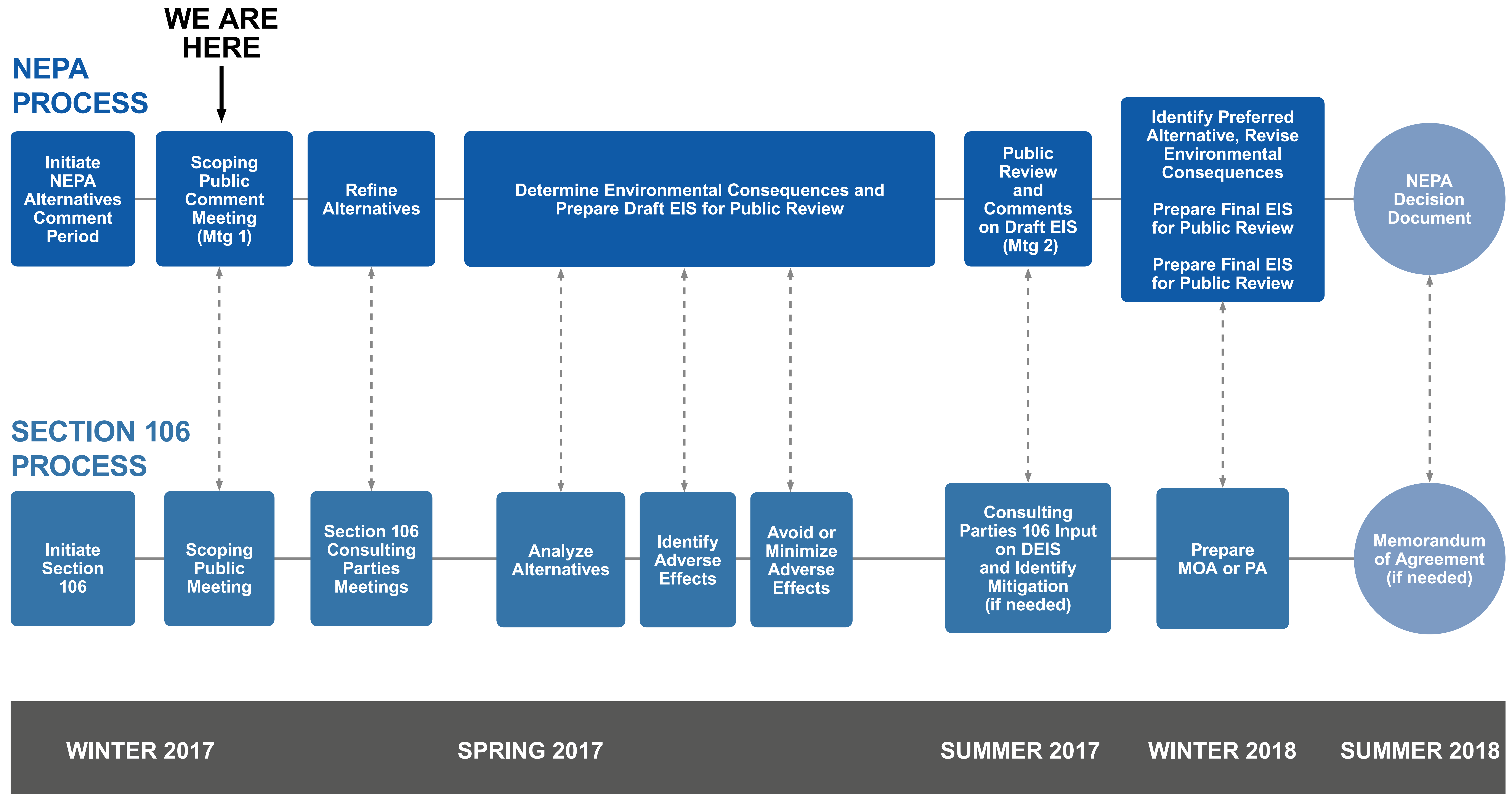
- **TONIGHT:** Provide comments or questions on the comment form
- **ELECTRONIC:** Submit comments or questions by **March 1, 2017** at [www.gsa.gov/dolhqexchange](http://www.gsa.gov/dolhqexchange) or email [alexis.gray@gsa.gov](mailto:alexis.gray@gsa.gov) using the subject line: DOL NEPA Scoping Comment.
- **WRITTEN:** Written comments may be mailed to:  
U.S. General Services Administration  
Attention: Alexis Gray  
NEPA Compliance Specialist  
Office of Planning and Design Quality  
Public Buildings Service  
301 7th Street, SW – Room 4004  
Washington, DC 20407
- **MAILED** comments must be postmarked by **March 1, 2017** to receive consideration





# PROCESS DIAGRAM

## Two Concurrent, Integrated Processes







# PROJECT GOALS AND PROGRAM



## THE PROPOSED CONSOLIDATED DOL HEADQUARTERS SITE WILL:

House up to  
**4,400 staff**

.....

Provide approximately  
**1 million rentable square feet**

.....

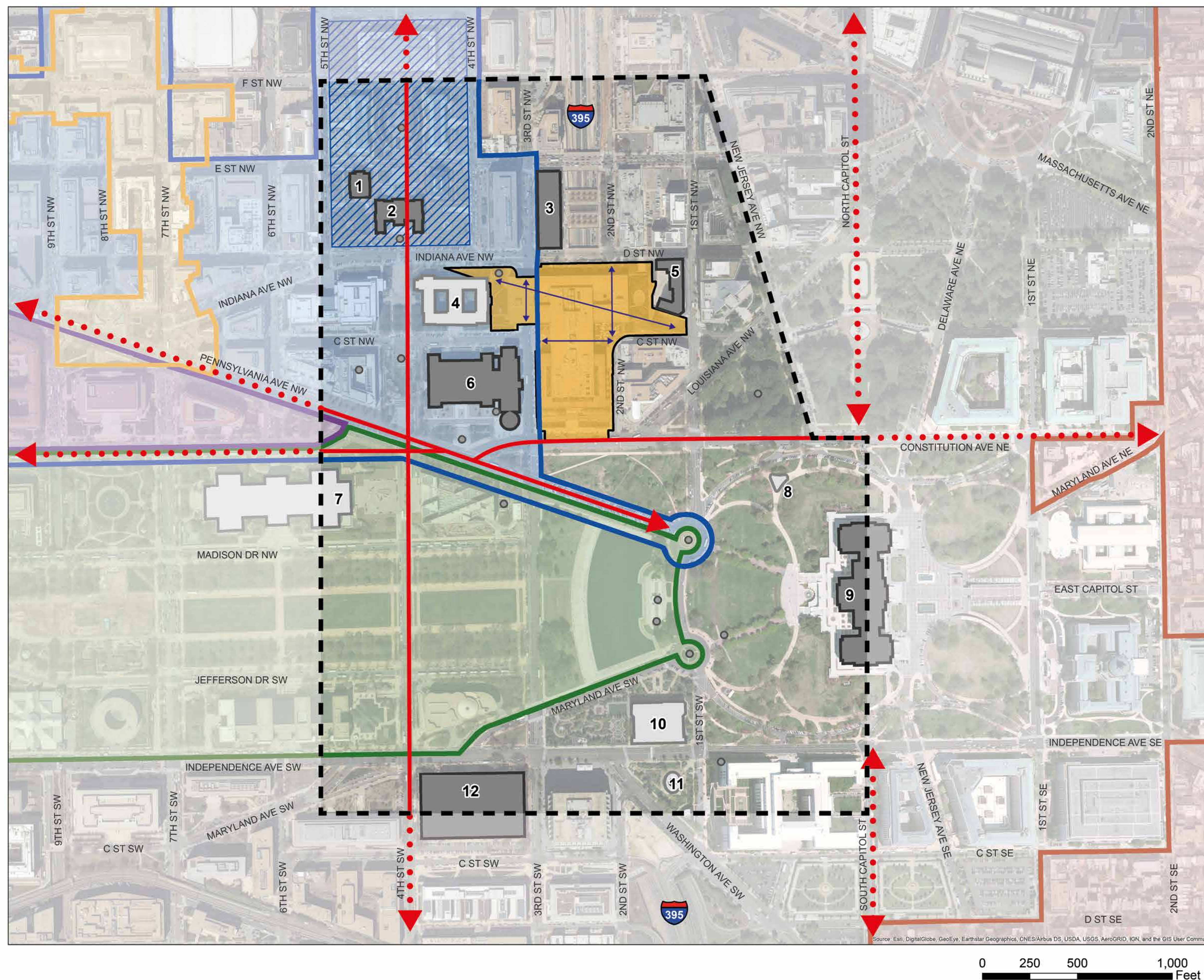
Include  
**200 parking spaces**

Be within a  
**walkable 1/2 mile from a Metrorail station entrance**

.....

Occupy a developable site of  
**less than 7 acres**





## LEGEND

- Frances Perkins Building & Site (Archaeological APE)
- Area of Potential Effect (APE)
- Capitol Hill Historic District
- Downtown Historic District
- Federal Triangle Historic District
- National Mall
- Pennsylvania Avenue National Historic Site
- Judiciary Square
- L'Enfant Plan of the City of Washington Vistas
- L'Enfant Plan of the City of Washington Right-of-Ways within the Site
- National Register of Historic Places Listed
- DC Inventory of Historic Sites
- 1. U.S. Court of Military Appeals
- 2. Old City Hall (DC Court of Appeals)
- 3. U.S. Tax Court
- 4. Municipal Center (Pending Nomination to the DC Inventory)
- 5. Federal Home Loan Bank Board
- 6. U.S. Courthouse for the District of Columbia (E. Barrett Prettyman U.S. Courthouse)
- 7. National Gallery of Art
- 8. Spring Grotto
- 9. U.S. Capitol & Grounds
- 10. U.S. Botanic Garden
- 11. Bartholdi Fountain
- 12. Social Security Administration (Wilbur Cohen Building)
- Other Memorials in Washington, DC including Multiple Property Listing sites



\*Site is within the L'Enfant Plan of the City of Washington