

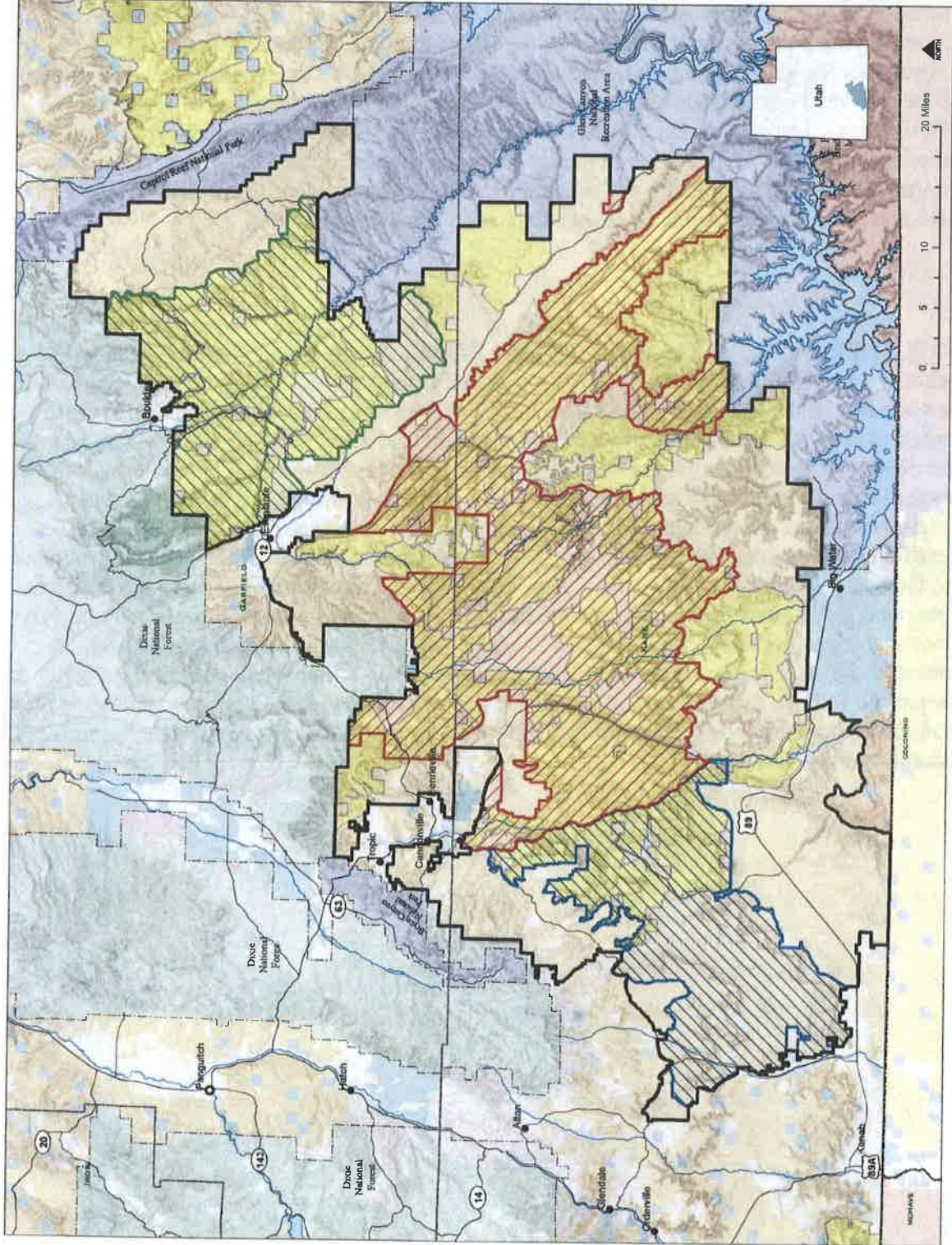
NOW, THEREFORE, I, DONALD J. TRUMP, President of the United States of America, by the authority vested in me by section 320301 of title 54, United States Code, hereby proclaim that the boundary of the Grand Staircase-Escalante National Monument is hereby modified and reduced to those lands and interests owned or controlled by the Federal Government within the boundaries described on the accompanying map, which is attached to and forms a part of this proclamation. I hereby further proclaim that the lands reserved as part of the monument shall be limited to the Grand Staircase, Kaiparowits, and Escalante Canyons areas identified on the accompanying map and shall be known as the Grand Staircase National Monument, the Kaiparowits National Monument, and the Escalante Canyons National Monument, respectively. These reserved Federal lands and interests in lands cumulatively encompass approximately 997,490 acres. The reservation of the Grand Staircase, Kaiparowits and Escalante Canyons national monuments as described on the accompanying map is confined to the smallest area compatible with the proper care and management of the objects identified by Proclamation No. 6920 that I find are appropriate for protection under the Antiquities Act.

NOW, THEREFORE, I, DONALD J. TRUMP, President of the United States of America, by the authority vested in me by section 320301 of title 54, United States Code, hereby proclaim that the boundary of the Bears Ears National Monument is hereby modified and reduced to those lands and interests owned or controlled by the Federal Government within the boundaries described on the accompanying map, including the Moon House and Doll House Ruins, which is attached to and forms a part of this proclamation. I hereby further proclaim that the lands reserved as part of the monument shall be limited to the Indian Creek and Shash Jáa areas identified on the accompanying map and shall be known as the Indian Creek National Monument and the Shash Jáa National Monument, respectively, the latter of which shall include the Moon House and Doll House Ruins. These reserved Federal lands and interests in lands cumulatively encompass approximately 201,397 acres. The reservation of the Indian Creek and Shash Jáa national monuments as described on the accompanying map is confined to the smallest area compatible with the proper care and management of the objects identified by Proclamation No. 9558, including the Moon House and Doll House Ruins, that I find are appropriate for protection under the Antiquities Act.

# Draft Grand Staircase-Escalante National Monument Modification

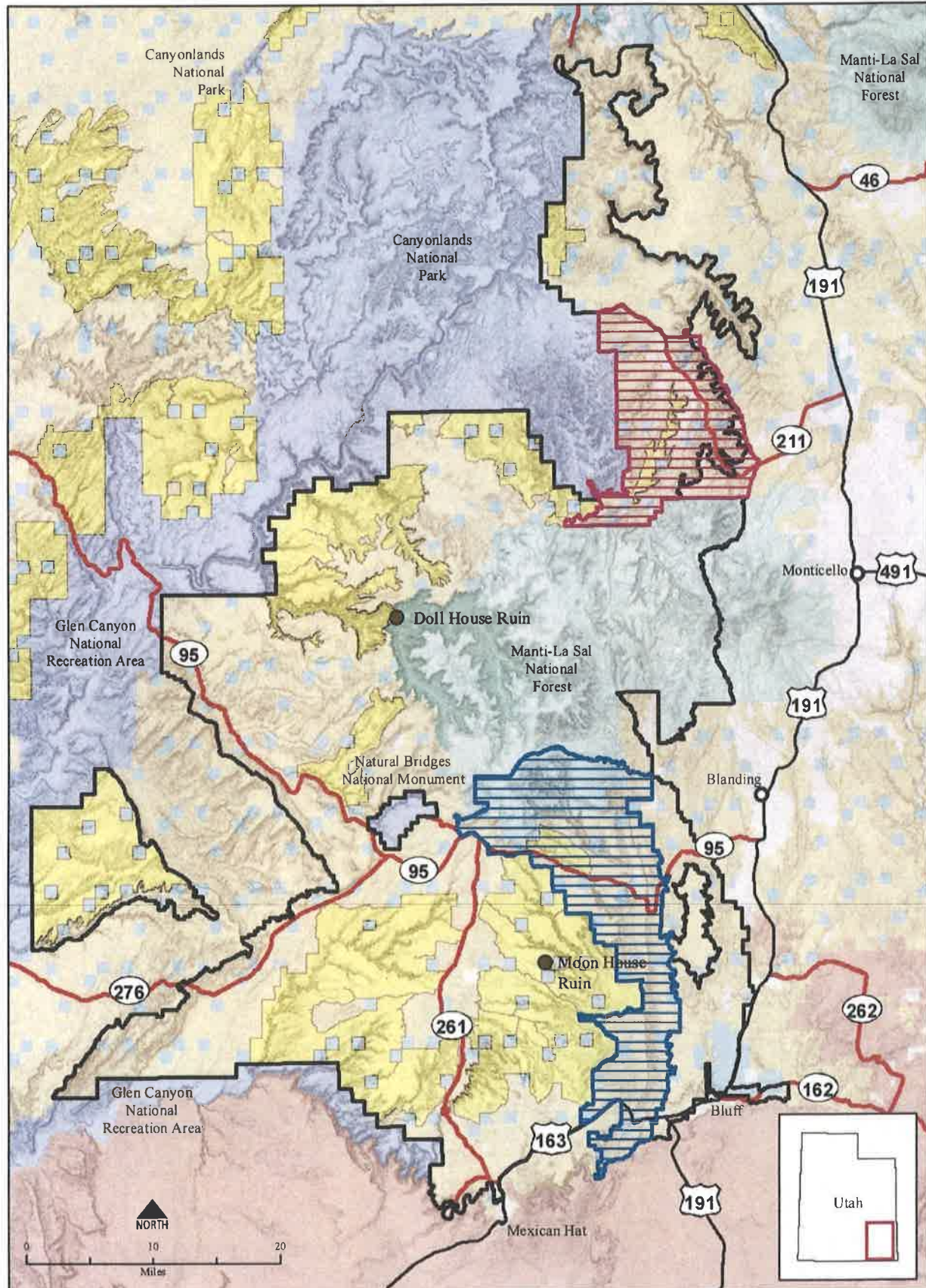
- Escalante Canyons National Monument
- Grand Staircase National Monument
- Kaiparowits National Monument
- Grandstaircase-Escalante National Monument Boundary
- BLM Wilderness Study
- Bureau of Land Management
- Indian Reservation
- National Park Service
- Private Land
- State Land
- State Parks and Recreation
- State Wildlife Management
- US Forest Service
- US Forest Service Wilderness

Internal Use Only





# Draft Bears Ears Boundary Modification



- |                                |                                 |                          |
|--------------------------------|---------------------------------|--------------------------|
| Shash Jaa National Monument    | Wilderness Study Area           | Private                  |
| Indian Creek National Monument | Bureau of Land Management (BLM) | State                    |
| Bears Ears National Monument   | Indian Reservation (IR)         | US Forest Service (USFS) |
| US Highway                     | National Park Service (NPS)     | USFS Wilderness Area     |
| State Highway                  |                                 |                          |

