

Gender Inclusive Toilet Rooms

Design Study

©COPYRIGHT 2016 Architectural Innovations, LLC

Copying or publication of this Study without the prior written approval of Architectural Innovations, LLC is expressly prohibited.

October 19, 2016
1003 McKnight Park Drive
Pittsburgh, PA 15237
412.364.4966
www.aipgh.com



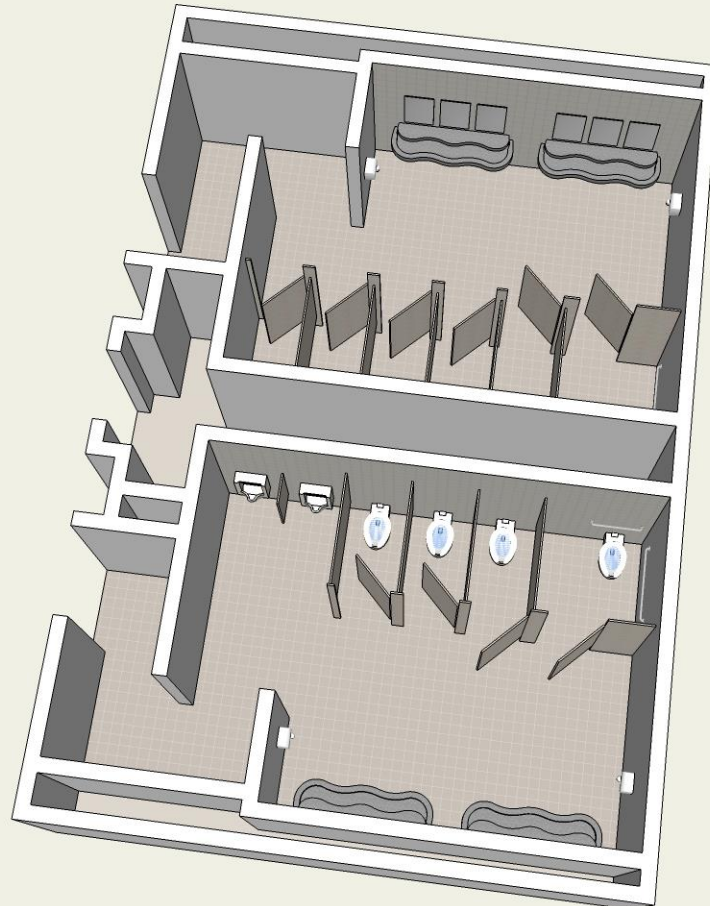
Gender Inclusive Toilet Rooms – Design Study

Option 1A: Existing Toilet Room Prototype - 2 ADA Stalls

Option 1A:

Bases for Design Comparison

Typical Gang Toilet Room (Gender Specific) with open partitions at the floor and ceiling



1,000 SF



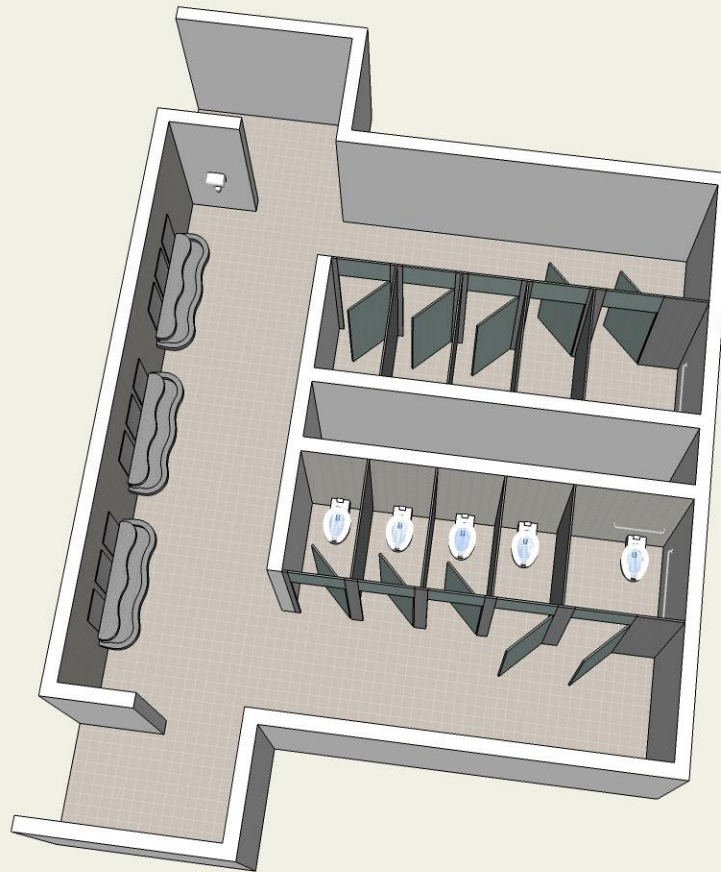
Gender Inclusive Toilet Rooms – Design Study

Option 2A: Toilet Room Prototype -- 2 ADA Stalls

Option 2A:

Cost Percentage Compared to Option 1A: (7.25% Less)

Similar design to a Typical Gang Toilet Room with full height partitions from floor to ceiling and separate access

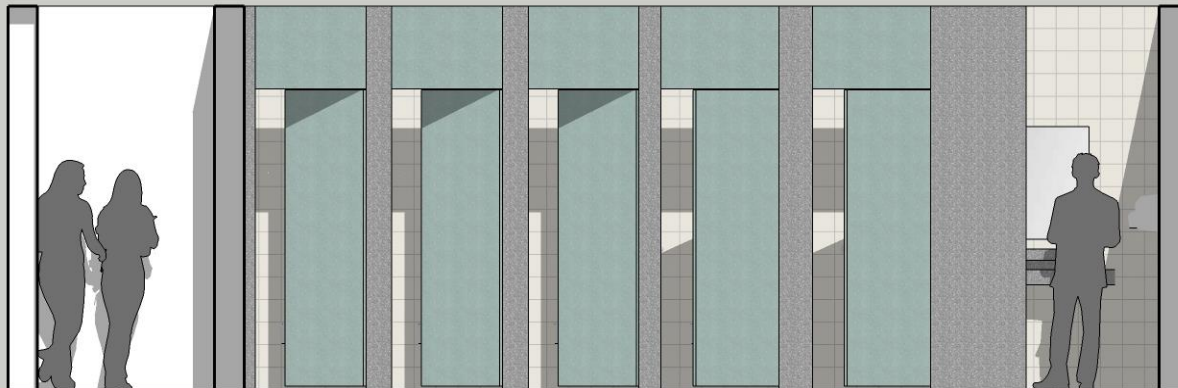


900 SF



Gender Inclusive Toilet Rooms – Design Study

Typical Full Height Toilet Cubicle System Elevation





Gender Inclusive Toilet Rooms – Design Study

Typical Full Height Toilet Cubicle System Examples





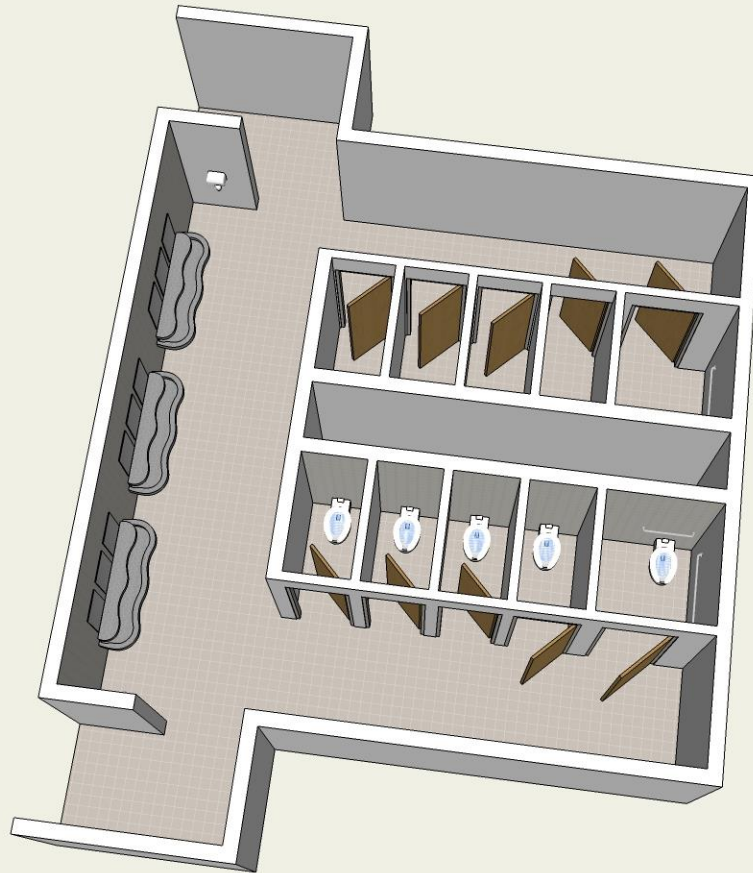
Gender Inclusive Toilet Rooms – Design Study

Option 2B: Toilet Room Prototype -- 2 ADA Stalls

Option 2B:

Cost Percentage Compared to Option 1A: 9.54% More

Same design as Option 2A with full height walls verses full height partitions and separate access



935 SF



Gender Inclusive Toilet Rooms – Design Study

Typical Full Height Constructed Wall Enclosure Elevation





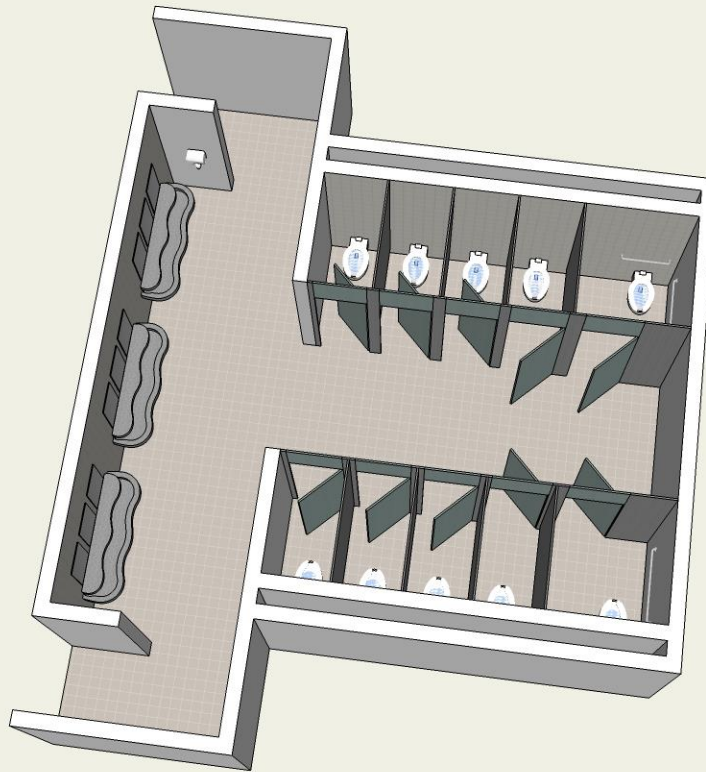
Gender Inclusive Toilet Rooms – Design Study

Option 3A: Toilet Room Prototype -- 2 ADA Stalls

Option 3A

Cost Percentage Compared to Option 1A: (11.69% Less)

Similar design to a Typical Gang Toilet Room with full height partitions from floor to ceiling and central access



750 SF



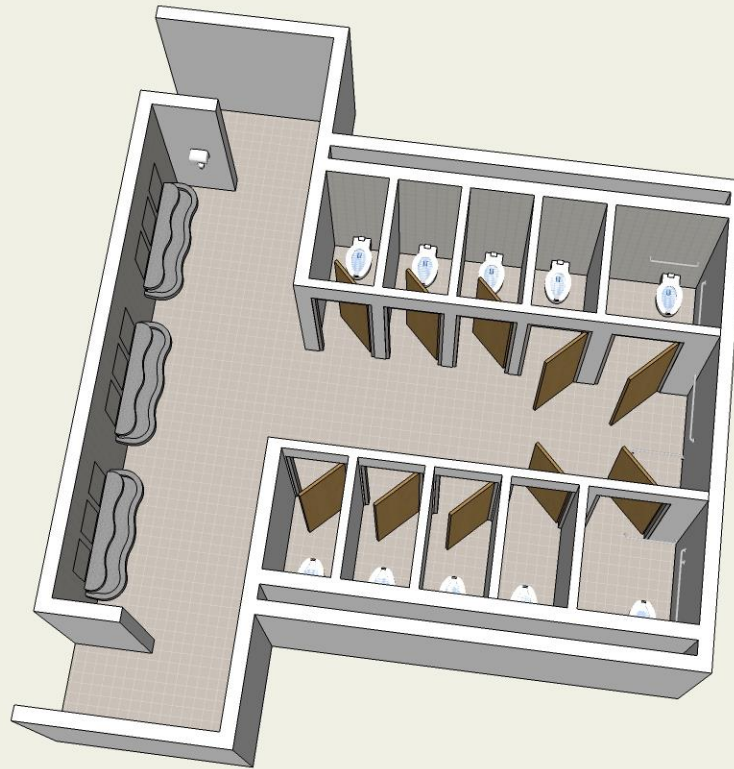
Gender Inclusive Toilet Rooms – Design Study

Option 3B: Toilet Room Prototype -- 2 ADA Stalls

Option 3B:

Cost Percentage Compared to Option 1A: 4.72% More

Same design as Option 3A with full height walls verses full height partitions and central access



780 SF



Gender Inclusive Toilet Rooms – Design Study

Option 4A: Toilet Room Prototype – All ADA Stalls

Option 4A:

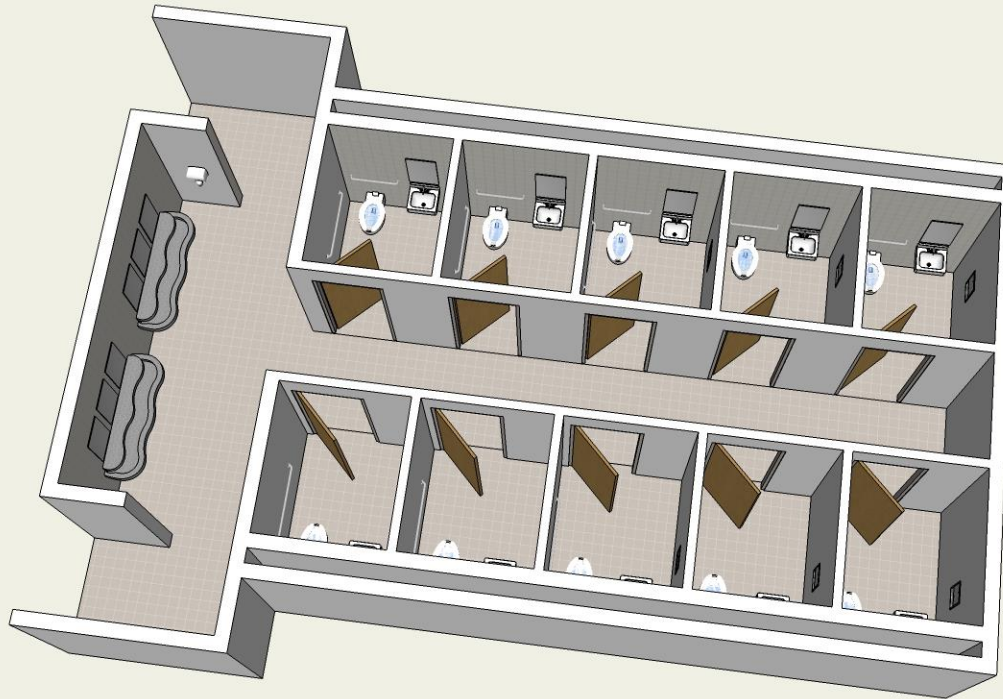
Cost Percentage Compared to Option 1A: 37% More

Not a Typical Gang Toilet Room – Individual toilet rooms with full height walls and sinks

All ADA Accessible Toilet Rooms

Secondary sink access

Secondary access off the Typical Common Building Corridor



1,050 SF



Gender Inclusive Toilet Rooms – Design Study

Option 4B: Toilet Room Prototype – All ADA Stalls

Option 4B:

Cost Percentage Compared to Option 1A: 19.32% More

Not a Typical Gang Toilet Room – Individual toilet rooms with full height walls and sinks

All ADA Accessible Toilet Rooms

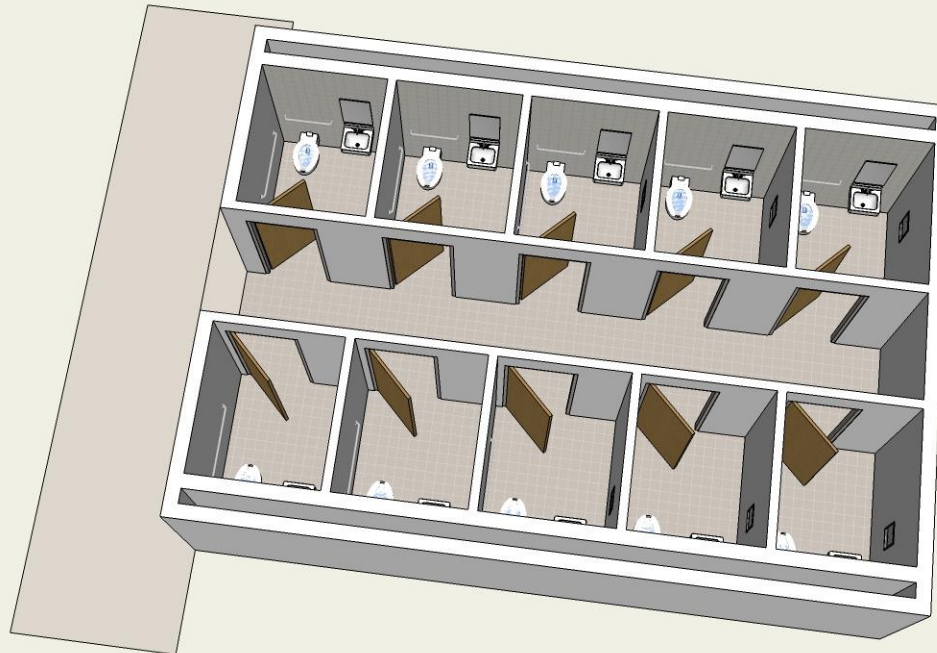
Secondary access off the Typical Common Building Corridor

Pros:

- Private and secure environment
- Less than 0.89% additional cost to be fully ADA accessible
- Helps temporarily handicapped and aging individuals
- Non-discriminatory among gender and handicapped individuals
- Uses 21.5% less square footage
- Potentially less costly – depends on material selection

Cons:

- Potentially 5-20% more costly - depends on material selection



785 SF



Gender Inclusive Toilet Rooms – Design Study

Option 4C: Toilet Room Prototype – All ADA Stalls

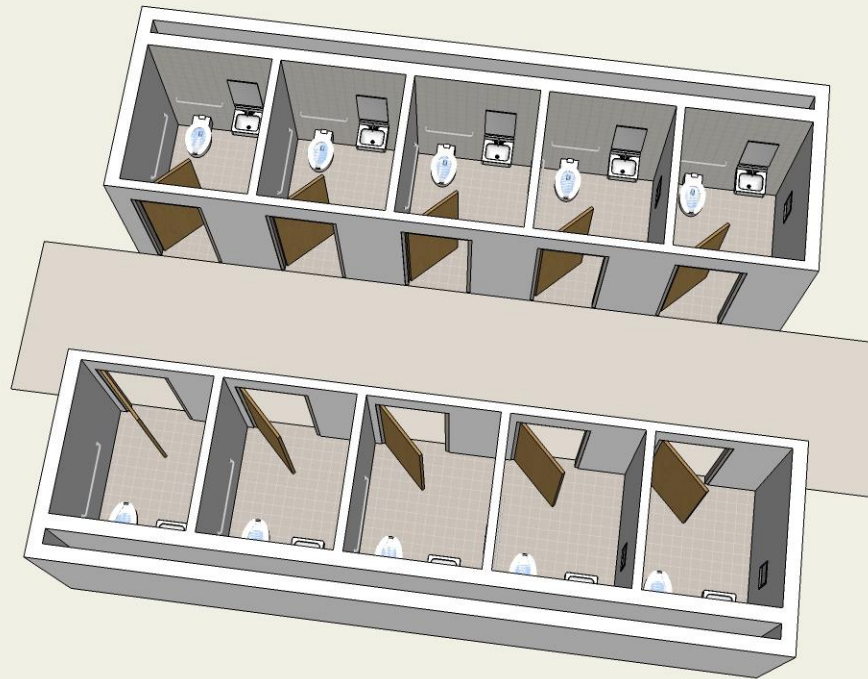
Option 4C:

Cost Percentage Compared to Option 1A: 12.26% More

Not a Typical Gang Toilet Room – Individual toilet rooms with full height walls and sinks

All ADA Accessible Toilet Rooms

Access off the Typical Common Building Corridor



630 SF
w/o Corridor



Gender Inclusive Toilet Rooms – Design Study

Option 4D: Toilet Room Prototype – 2 ADA Stalls

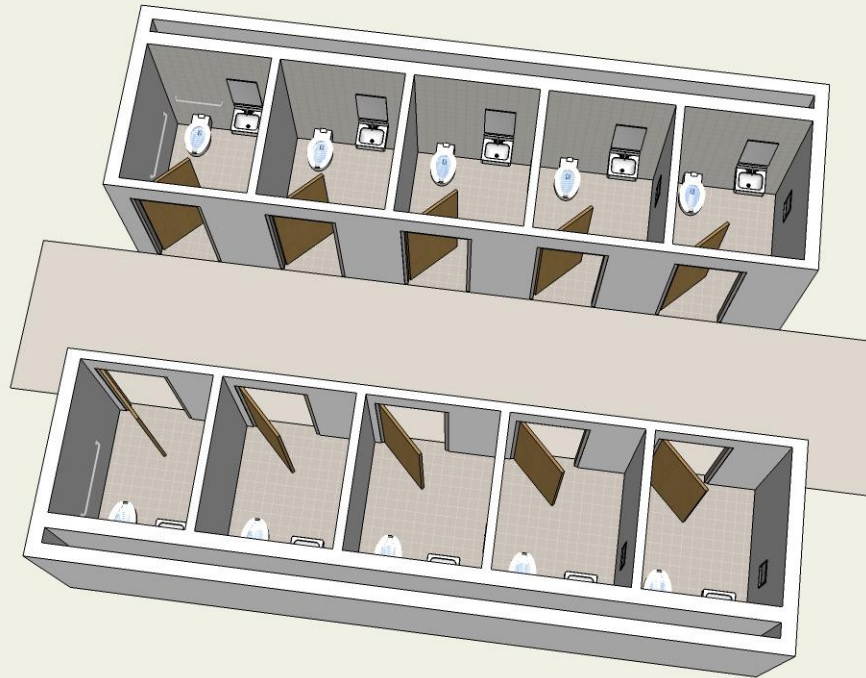
Option 4D:

Cost Percentage Compared to Option 1A: 11.37% More

Not a Typical Gang Toilet Room – Individual toilet rooms with full height walls and sinks

Two ADA Accessible Toilet Rooms

Access off the Typical Common Building Corridor



630 SF
w/o Corridor