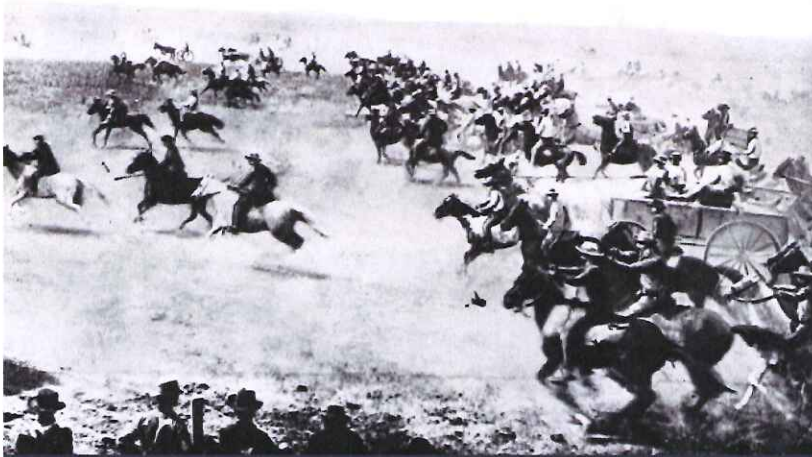


# Medicaid Rebalancing Act of 2020



*A land run state, Oklahoma's strength is found in the heart and work of her people.*

*Homesteaders were given 160 acres of land — not as a hand out, but as an opportunity to thrive given the chance for prosperity.*

*People earned the rewards that came with hard work and personal responsibility.*

Now is the time to create a health care policy that is free from federal dictates and reflects our state's values of individual freedom and personal responsibility. Let's create a plan that reflects our standard of Oklahomans lending a hand to our neighbors.

The **Medicaid Rebalancing Act of 2020** will feature the Insure Oklahoma HealthStead Account (HSA), which will provide health care access for Oklahoma adults working to improve their health status and earning potential, regardless of the challenges they face. It will be available to Oklahomans below 133 percent of the federal poverty level (FPL).

This plan will reduce the size of Oklahoma's Medicaid program, reduce the number of uninsured Oklahomans and promote responsible Medicaid spending.

Our history proves that when Oklahomans are given the freedom and opportunity to succeed, they thrive and our state is better for it.

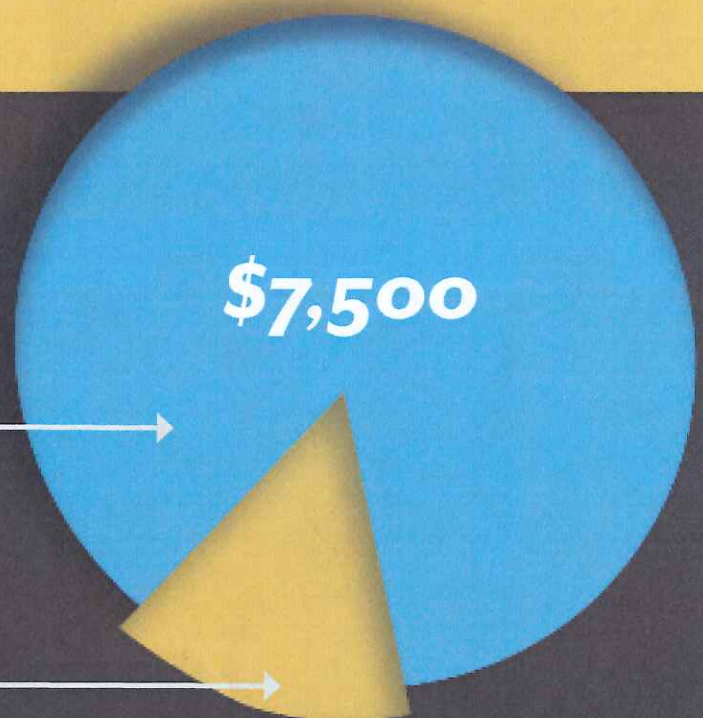
## HealthStead Account Model

**\$6,000**

- Premiums
- Deductibles
- Expenses

**\$1,500**

- Incentives for social & health indicators

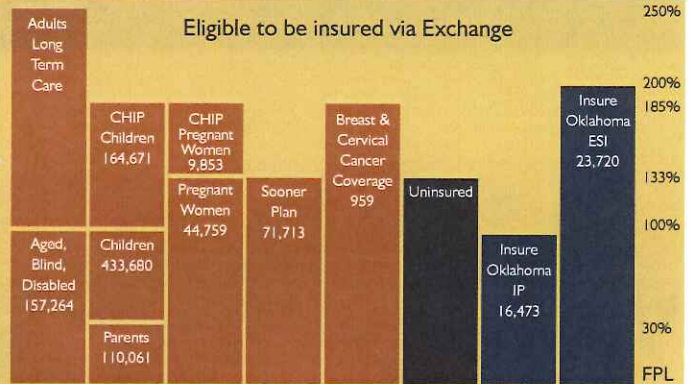


Oklahoma  
**HealthCare**  
Authority



# How Oklahoma Will Rebalance Medicaid

## Before the Rebalancing Act The Landscape Today



## The Rebalancing Act

1

Make provider rate cuts to offset current revenue shortfalls.

2

Create Insure Oklahoma HealthStead Account.

3

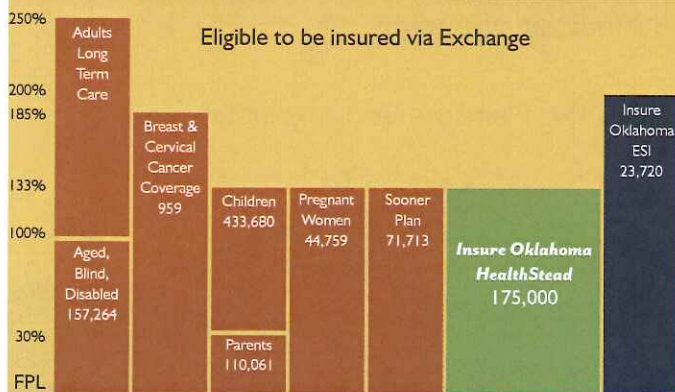
Create personal responsibility-based health incentive program.

4

Move SoonerCare members > 133 FPL to Exchange.

5

Restore Medicaid provider rate cuts.



## After the Rebalancing Act Insure Oklahoma HealthStead

## Dividends

35%

UNINSURED  
OKLAHOMANS

17%

MEDICAID  
ENROLLMENT

350<sub>k</sub>

IN PRIVATE  
MARKET

\$3<sup>+</sup>B

ECONOMIC  
ACTIVITY