



UNITED STATES SECRET SERVICE
WASHINGTON FIELD OFFICE &
PRESIDENTIAL PROTECTION DIVISION

United States Secret Service
Washington Field Office

**Police Meeting for the Visit of
Mogul to the Lincoln Memorial
on May 3, 2020**

DCFD

MPD

NPS

USPP

USSS

UNCLASSIFIED / LAW ENFORCEMENT SENSITIVE





UNITED STATES SECRET SERVICE
WASHINGTON FIELD OFFICE &
PRESIDENTIAL PROTECTION DIVISION

- **Introductions**
- **Arrival & Departure Times**
- **TS Routes**
- **Manpower**





UNITED STATES SECRET SERVICE
WASHINGTON FIELD OFFICE &
PRESIDENTIAL PROTECTION DIVISION

Introductions

- **WFO Field Office Coordinator: SA** (b) (6), (b) (7)(C), (b) (7)(F)
- **PPD Site Agent: SA** (b) (6), (b) (7)(C), (b) (7)(F)
- **PPD Lead Agent: SA** (b) (6), (b) (7)(C), (b) (7)(F)
- **PPD TS Agent: SA** (b) (6), (b) (7)(C), (b) (7)(F)
- **Field Office Supervisor: ATSAIC** (b) (6), (b) (7)(C), (b) (7)(F)





UNITED STATES SECRET SERVICE
WASHINGTON FIELD OFFICE &
PRESIDENTIAL PROTECTION DIVISION

ADVANCE TEAM

Field Office Supervisors:

SAIC (b) (6), (b) (7)(C), (b) (7)(F) – WFO

PPD Supervisor:

ATSAIC (b) (6), (b) (7)(C), (b) (7)(F) – WFO

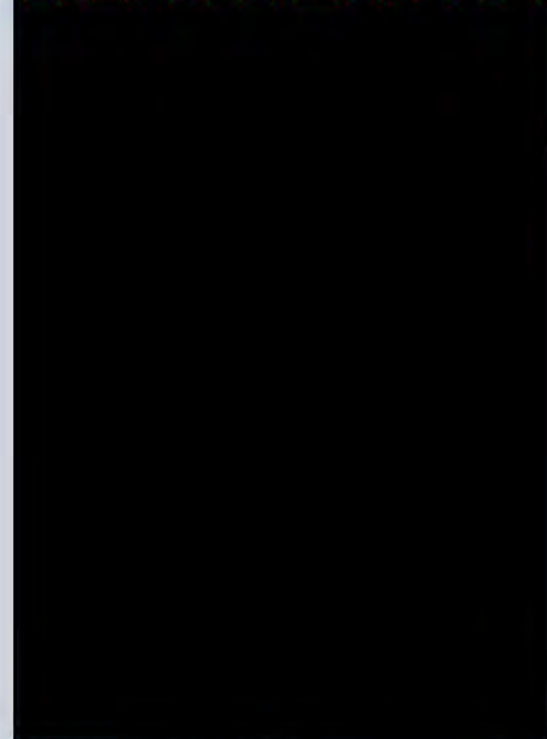
PPD 2nd Supervisor:

SAIC Robert Engel – PPD

ASAIC John Gutsmedl – PPD

-
-
- Lead Advance
 - Field Office Coordinator
 - Site (Lincoln Memorial)
 - Site Counterpart
 - Medical Advance Liaison
 - Medical Advance Liaison
 - Transportation
 - Intelligence
 - Intelligence Counterpart
 - Technical Security Lead
 - Technical Security Advisor
 - Counter Sniper
 - Counter Surveillance
 - Counter Assault Team
 - Critical Systems Protection
 - Magnetometers
 - HAMMER

(b) (6), (b) (7)(C), (b) (7)(F)





UNITED STATES SECRET SERVICE
WASHINGTON FIELD OFFICE &
PRESIDENTIAL PROTECTION DIVISION

Draft Event Timeline

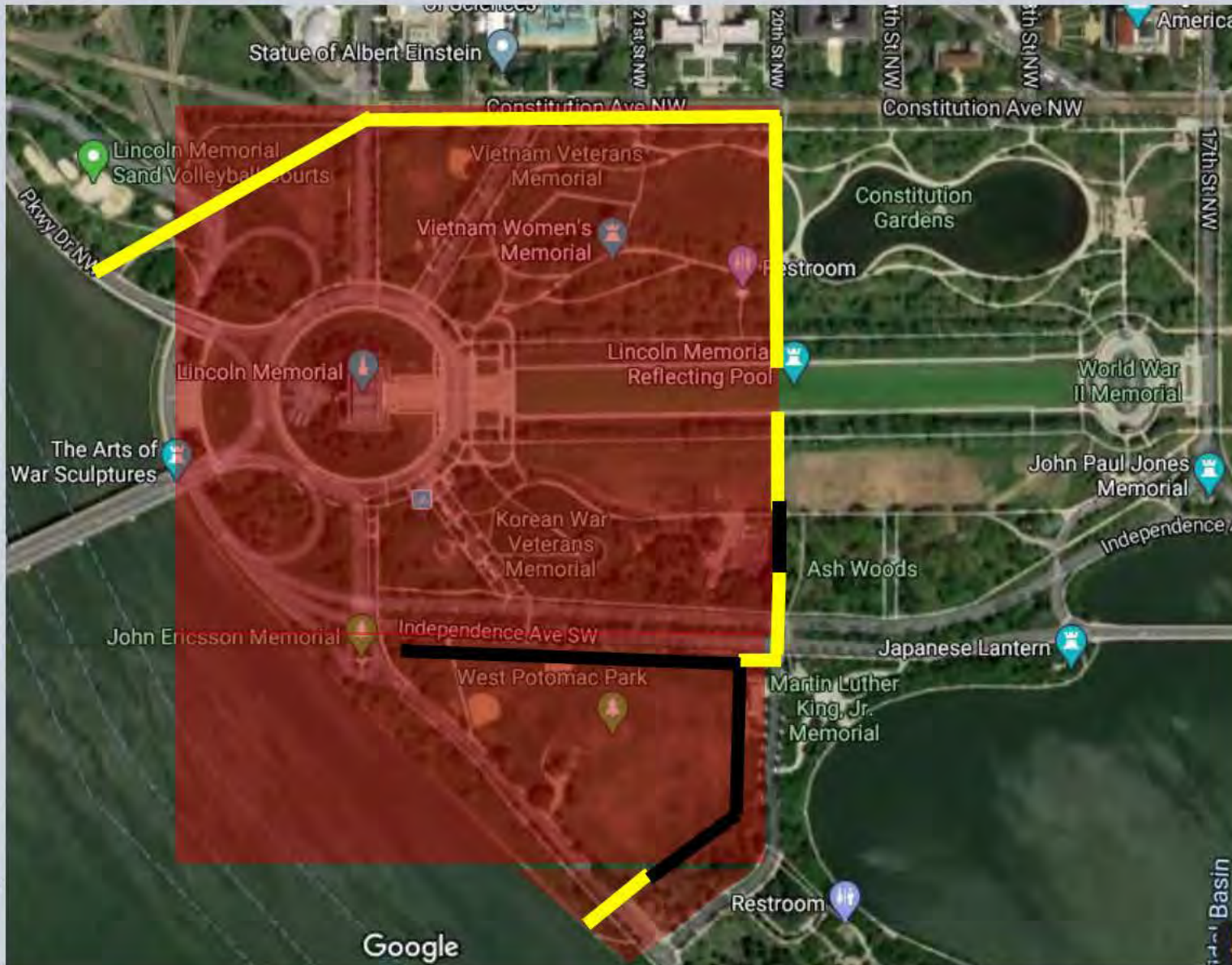
- 1300 Hours: USSS Poststander Briefing**
- 1330 Hours: USSS Posts Go Up**
- 1400 Hours: Security Sweeps Begin**
- 1700 Hours: Security Sweeps Conclude**
- 1850 Hours: Depart White House en route Lincoln Memorial**
- 1855 Hours: Arrive Lincoln Memorial**
- 2050 Hours: Depart Lincoln Memorial en route White House**
- 2055 Hours: Arrive White House**





UNITED STATES SECRET SERVICE
WASHINGTON FIELD OFFICE &
PRESIDENTIAL PROTECTION DIVISION

Perimeter Overview



Fencing:

— Existing

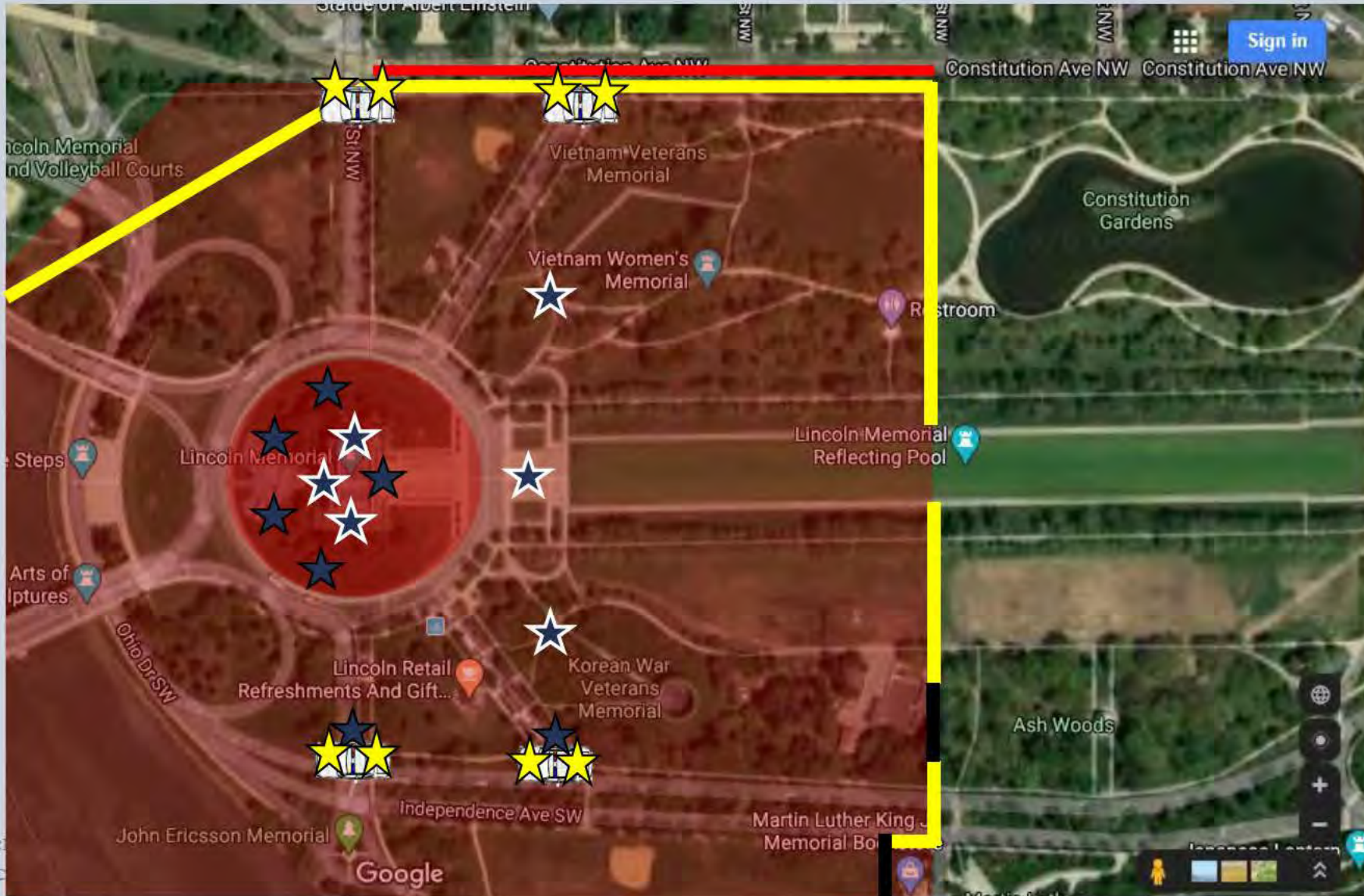
— Requested





UNITED STATES SECRET SERVICE WASHINGTON FIELD OFFICE & PRESIDENTIAL PROTECTION DIVISION

Manpower Overview



USSS GOV



Marked Car



USSS



MPD



USPP

No Pedestrians During Event



No Parking

